

**GENERAL BUILDING SPECIFICATIONS: 6' x 10' Bullet Resistant Guard Booth**

- A. GENERAL: Pre-assemble building of steel construction.
- 1 DIMENSIONS: 6'-0" wide and 10'-0" long and 104" nominal outside height. Interior dimension from floor to ceiling shall be 90".
- 2 FRAME CONSTRUCTION: Framing shall be 14 GA or heavier mechanical tube. All joints shall be MIG welded.
- 3 BASE/FLOOR: Building shall typically be constructed on a 4" high steel base frame with protective rust inhibitive undercoating coating. Floor assembly shall be comprised of 1/8" aluminum tread plate finished floor with (R-13) rigid insulation below floor. Built in steel fork pockets.
- 4 WALL PANELS: Exterior wall panels shall provide 1/4" thick steel UL 752 Level 3 bullet resistant protection. 3" wall thickness, rigid board polyisocyanurate insulation (2 3/4" - R-18), and a 18 GA interior face. Panels shall be galvanized and shall be MIG welded into place.
- 5 ROOF/CEILING ASSEMBLY: Interior ceiling shall be a panel system providing smooth flat interior, constructed from 20 ga pre-finished white steel with rigid polyisocyanurate insulation (R-6.5) above. Exterior roof shall be constructed from 20 ga, G-60 interlocking pan sections. Sections shall be 3" high with varying widths. Roof shall not have ballistic protection. Roof shall drain into full perimeter gutter system with (1)downspout. Fascia/gutter shall provide a 3" perimeter overhang. Fascia and downspout color to be same color as building.
- 6 FINISH: Surfaces shall be painted using an epoxy/urethane prime to paint system designed to withstand salt spray and freeze thaw testing. Building color shall be determined. Fascia/gutter and downspouts shall be same color as building exterior. Interior color shall match exterior.
- 7 WINDOWS: Fixed windows shall be clear UL 752 level 3 glass clad polycarbonate (GCP) low spall bullet resistant protection glazing. Glass shall be framed to building using steel/aluminum framing system with no exposed fasteners. Optional window tinting can be provided, quote provided on request.
- 8 DOOR: (Qty-1) 36 1/2" x 84" Sliding steel door shall provide UL 752 level 3 bullet resistant protection with a 26" x 34" lite UL 752 level 3 low spall bullet resistant protection glazing), top hung style using an overhead track and heavy duty ball bearing steel tires with steel hub. Door shall be supplied with mortise hook bolt lock set with removable core type cylinder compatible with Best core exterior and interior thumb turn, heavy duty pull handles, and aluminum threshold (steel threshold not acceptable).
- A 9 ELECTRICAL: Electrical shall be wired according to N.E.C. standards. Wiring shall be within surface mounted EMT conduit, and included shall be (qty-2) GFI protected duplex receptacle with tester. Load center to be 125amp, main lug, 12 space
- 10 LIGHTING: Interior lighting shall be (1) 4' LED 40W light with wall switch.
- 11 HEATER: Heater shall be a wall mount electric unit with fan forced operation, 1500w /5120 BTU, 120V and thermostat in an enamel coated 20 gauge steel cabinet. Heater model may vary due to geographical location of installation, additional cost may apply.
- 12 AC UNIT: Air conditioner shall be a thru wall; 115 volt, R-410a refrigerant, 12,000 cooling BTU; 10.5 CEER, electronic controls with remote electronic digital thermostat control, four-way air direction, 3 cool / 3 fan speeds. Exterior shroud shall provide UL 752 Level 3 bullet resistant protection.
- 13 COUNTER: (Qty-1) Shall be full width by 18"- 24" deep painted steel work space counter. Supplied with counter top drop wire grommet(s).



**Twin Modular Services Inc.**  
 321 Heritage Loop  
 Glassboro, NJ. 08028  
 Ph: 856-227-0057  
 e-mail: info@guardboothonline.com

[www.guardboothonline.com](http://www.guardboothonline.com)  
[www.info@guardboothonline.com](mailto:info@guardboothonline.com)

Notice - Twin Modular Services inc. claims proprietary rights in the information disclosed on this drawing. It is issued in confidence for engineering information only and may not be used, in whole or in part, to manufacture anything whether or not shown hereon, reproduced or disclosed to anyone without direct written permission from Twin Modular Services Inc.

TITLE:	6'-0" X 10'-0" STEEL BUILDING
JOB NO:	
QUOTE NO:	-
LOCATION:	TBD
MOD NO:	610GBBR
COLOR:	SEE SPECIFICATIONS
DATE:	11/20/23
DRAWN BY:	CDA
SCALE:	N.T.S.
SHEET:	1 OF 2

REVISION STATUS OF SHEETS			
	A	A	REV SH
	2	1	

CERTIFICATION

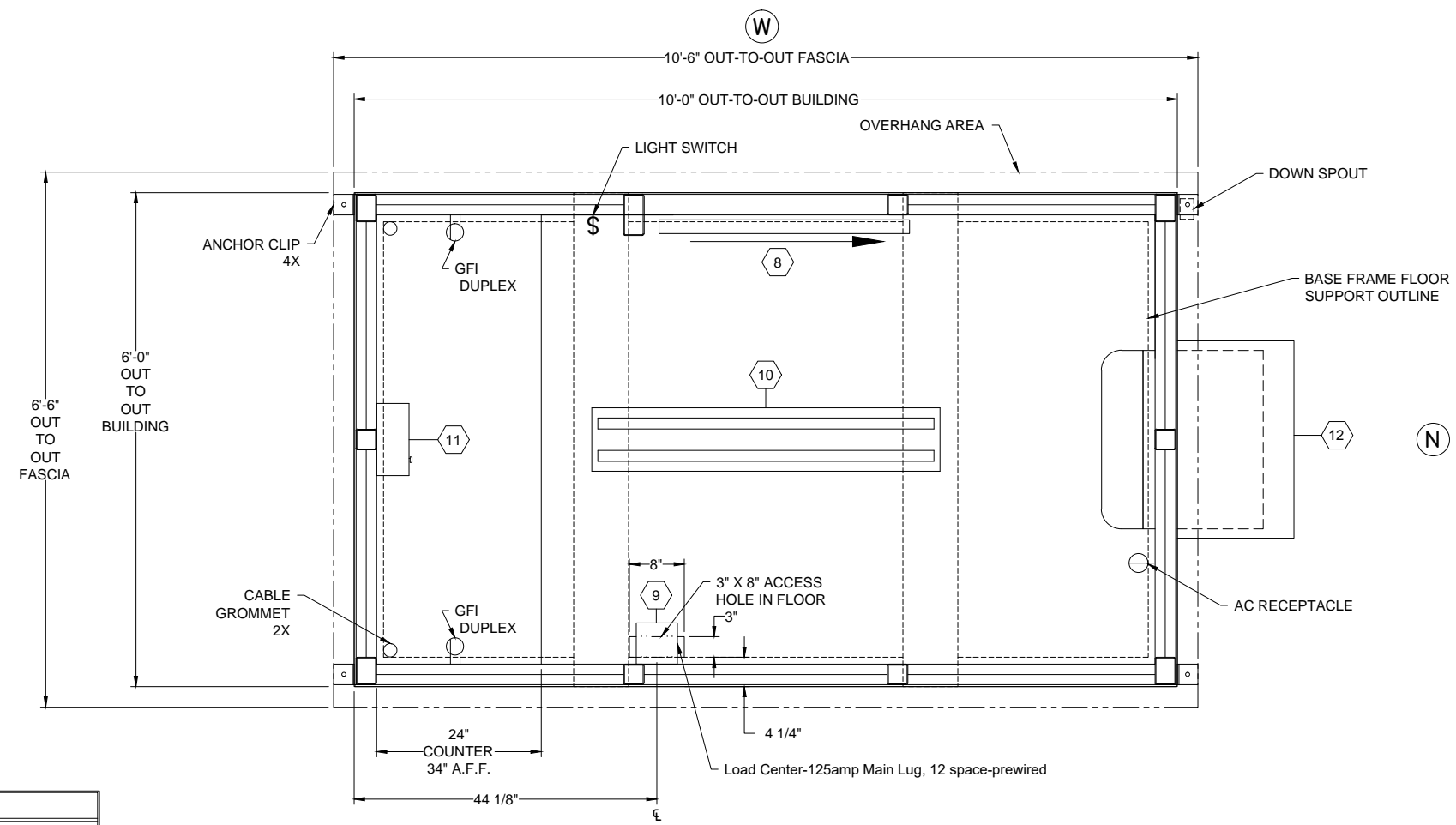
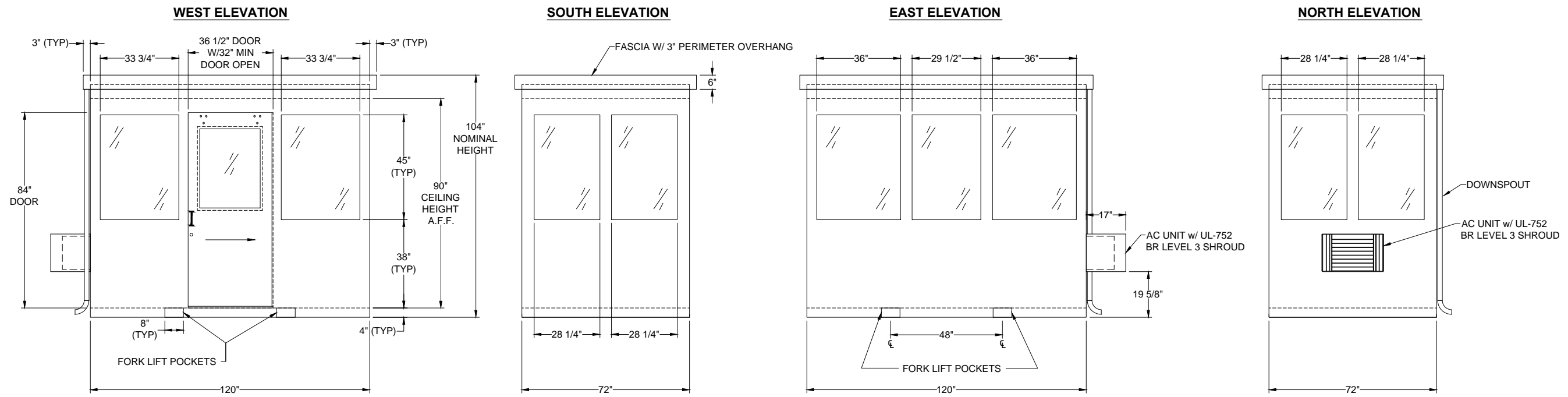
REV	DESCRIPTION	DATE	BY
A	UPDATE REVISION STATUS OF SHEETS; REVISED NOTE 9	05.14.19	CDA
REVISIONS			

**CUSTOMER APPROVAL**

THESE DRAWINGS AND SPECIFICATIONS HAVE BEEN PRODUCED IN ACCORDANCE WITH TWIN MODULAR SERVICE INC. PROPOSAL AND THE PROJECT DESIGN. THE PROJECT WILL BE MANUFACTURED IN ACCORDANCE TO THIS INFORMATION AS SUBMITTED. THE SECURING OF BUILDING PERMITS AND COMPLIANCE WITH APPROPRIATE BUILDING CODES IS THE RESPONSIBILITY OF THE PURCHASER OF THE BUILDING AND NOT THE RESPONSIBILITY OF TWIN MODULAR SERVICES INC..

- APPROVED AS SUBMITTED
- APPROVED AS NOTED
- REVISE AND RESUBMIT

SIGNED: \_\_\_\_\_ DATE: \_\_\_\_\_



**CUSTOMER APPROVAL**

THESE DRAWINGS AND SPECIFICATIONS HAVE BEEN PRODUCED IN ACCORDANCE WITH TWIN MODULAR SERVICE INC. PROPOSAL AND THE PROJECT DESIGN. THE PROJECT WILL BE MANUFACTURED IN ACCORDANCE TO THIS INFORMATION AS SUBMITTED. THE SECURING OF BUILDING PERMITS AND COMPLIANCE WITH APPROPRIATE BUILDING CODES IS THE RESPONSIBILITY OF THE PURCHASER OF THE BUILDING AND NOT THE RESPONSIBILITY OF TWIN MODULAR SERVICES INC.

APPROVED AS SUBMITTED  
 APPROVED AS NOTED  
 REVISE AND RESUBMIT

SIGNED: \_\_\_\_\_ DATE: \_\_\_\_\_

**PLAN VIEW SCALE**

REV	DESCRIPTION	DATE	BY
A	REVISED PLAN VIEW, ADDED ADDITIONAL GFI AND GROMMET	05.14.19	CDA
REVISIONS			

CERTIFICATION

**Twin Modular Services Inc.**  
 321 Heritage Loop  
 Glassboro, NJ. 08028  
 Ph: 856-227-0057  
 e-mail: info@guardboothonline.com

www.guardboothonline.com  
 www.info@guardboothonline.com

Notice - Twin Modular Services inc. claims proprietary rights in the information disclosed on this drawing. It is issued in confidence for engineering information only and may not be used, in whole or in part, to manufacture anything whether or not shown hereon, reproduced or disclosed to anyone without direct written permission from Twin Modular Services Inc.

TITLE:	6'-0" X 10'-0" STEEL BUILDING
JOB NO:	
QUOTE NO:	
LOCATION:	TBD
MOD NO:	610GBBR
COLOR:	SEE SPECIFICATIONS
DATE:	11.22.23
DRAWN BY:	CDA
SCALE:	1/8" = 1'
SHEET:	2 OF 2