

GENERAL BUILDING SPECIFICATIONS: (QTY-1 BUILDING)

- A. GENERAL: Pre-assemble building fabricated from low maintenance, lightweight corrosive resistant aluminum (factory fabricated). Building exterior shall have no exposed fasteners.
- 1 DIMENSIONS: 6'-0" wide x 6'-0" long, 90" interior ceiling height and 98 1/2" nominal outside height.
- 2 FRAME CONSTRUCTION: Provide structural framing of 6063-T6 aluminum alloy extrusions. Members shall have a Quaker Bronze finish. Connections shall be fastened internally to framing systems using mechanical fasteners or MIG welded where necessary. Exposed fasteners on framing system are not acceptable.
- 3 BASE/FLOOR: Building shall be constructed on a 4" mechanical steel tube base frame. Floor shall be comprised of 1/8" aluminum tread plate finished floor. Forklift pockets shall be provided at 32" center-to-center for lifting.
- 4 WALL PANELS: Exterior shall be .032 Quaker Bronze aluminum, 2 3/4" rigid board polyiso insulation (R-18) and interior .032 Quaker Bronze aluminum. Overall thickness of panel shall be 3".
- 5 CEILING/ROOF: Interior ceiling shall be a panel system providing a smooth flat interior, constructed from 20 GA pre-finished white steel with rigid board polyiso insulation (R-6.5) above. Exterior roof shall be constructed using 20 GA, G-60 interlocking pan sections. Sections shall be 3" high varying widths. Roof shall drain into full perimeter gutter system with drain holes.
- 6 WINDOWS: Fixed windows shall be single pane 1/4" clear tempered safety glass. Glass shall be glazed within wall system extrusions and not be fastened to exterior wall. Glass sealed with concealed gasket system. (Qty-1) Sliding window shall have aluminum frame and single pane 1/4" clear tempered safety glass, insect screen and locking device. Slide window frame color to match building finish.
- 7 DOOR: (Qty-1) Sliding door shall be extruded aluminum frame, half glass (single pane 1/4" clear tempered safety glass), top hung style using an overhead track and heavy duty ball bearing nylon tires with steel hub. Door shall be supplied with mortise hook bolt lockset with removable cylinder. Door same color as building.
- 8 ELECTRICAL: Building shall be wired according to N.E.C. Standards. Load center shall be a 125 amp, 120/240 volt unit with 6/12 open circuits. Wiring shall be within surface mounted EMT conduit, and included shall be (qty-2) GFI protected duplex receptacles with tester and (qty-1) 115V AC receptacle.
- 9 LIGHTING: Lighting shall be (qty-1) 4' LED light fixture with acrylic lens located over counter and shall be controlled by wall switch near door.
- 10 HEATER: Heating shall be a wall mounted electric unit with fan forced operation, 1500w/5120 BTU, 120V and thermostat in an enamel coated 20 GA steel cabinet.
- 11 AC UNIT: Air Conditioner shall be a thru-wall unit, 6000 cooling Btu, 115V, 24-hour timer, remote controlled, 3-cooling and fan-only speeds, plus auto fan, 8-way air flow control and auto-restart saves settings if power is interrupted.
- 12 COUNTER: Full width by 24" deep by 3/4" white melamine work space counter supplied with counter top drop wire grommet(s).
- 13 FOUNDATION: Foundation is by others in the field. Recommended concrete pad size is 12" minimum larger than building in both length and width dimensions. Pad must be level. Building is to be anchored to pad using 1/2" diameter minimum anchor bolt (by others), (qty-1) per anchor clip.

CUSTOMER APPROVAL

THESE DRAWINGS AND SPECIFICATIONS HAVE BEEN PRODUCED IN ACCORDANCE WITH TWIN MODULAR SERVICES INC. PROPOSAL AND THE PROJECT DESIGN. THE PROJECT WILL BE MANUFACTURED IN ACCORDANCE TO THIS INFORMATION AS SUBMITTED. THE SECURING OF BUILDING PERMITS AND COMPLIANCE WITH APPROPRIATE BUILDING CODES IS THE RESPONSIBILITY OF THE PURCHASER OF THE BUILDING AND NOT THE RESPONSIBILITY OF TWIN MODULAR SERVICES

- ☐ APPROVED AS SUBMITTED
☐ APPROVED AS NOTED
☐ REVISE AND RESUBMIT

SIGNED: _____ DATE: _____

**REVISION STATUS
OF SHEETS**

-	-	REV
2	1	SH

CERTIFICATION

TITLE: 6'-0" X 6'-0"
ALUMINUM BUILDING

JOB NO: 230159

QUOTE NO: -

LOCATION: T.B.D.

MOD NO: 66GBALSD

COLOR: SEE SPECIFICATIONS

DATE: 06.29.23

DRAWN BY: CDA

SCALE: N.T.S.

SHEET: 1 OF 2

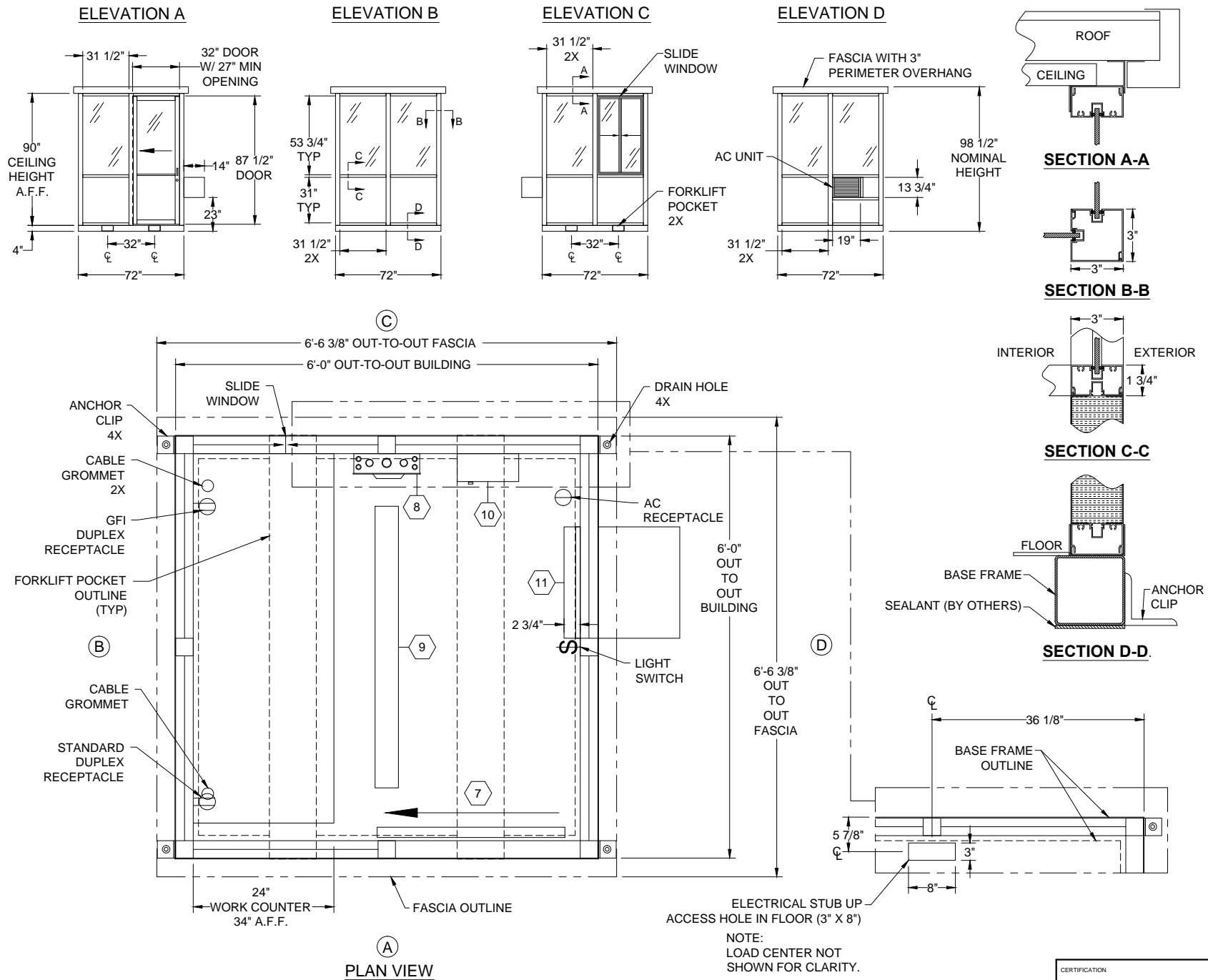


Twin Modular Services Inc.

1001 Lower Landing Rd. Ste 607
Blackwood, NJ 08012
PHONE: 856-227-0057
e-mail: info@guardboothonline.com
www.guardboothonline.com

Notice - Twin Modular Services Inc. claims proprietary rights in the information disclosed on this drawing. It is issued in confidence for engineering information only and may not be used, in whole or in part, to manufacture anything whether or not shown hereon, reproduced or disclosed to anyone without direct written permission from Twin Modular Services Inc.

TWIN MODULAR
SERVICES INC
1001 LOWER LANDING ROAD
BLACKWOOD, NJ 08012



TWIN MODULAR
SERVICES INC
1001 LOWER LANDING ROAD
BLACKWOOD, NJ 08012



Twin Modular Services Inc.
1001 Lower Landing Rd. Ste 607
Blackwood, NJ 08012
PHONE: 856-227-0057
e-mail: info@guardboothonline.com
www.guardboothonline.com

Notice - Twin Modular Services Inc. claims proprietary rights in the information disclosed on this drawing. It is issued in confidence for engineering information only and may not be used, in whole or in part, to manufacture anything whether or not shown hereon, reproduced or disclosed to anyone without direct written permission from Twin Modular Services Inc.

TITLE:	6'-0" X 6'-0" ALUMINUM BUILDING
JOB NO:	230159
QUOTE NO:	-
LOCATION:	T.B.D.
MOD NO:	66GBALSD
COLOR:	SEE SPECIFICATIONS
DATE:	06.29.23
DRAWN BY:	CDA
SCALE:	N.T.S.
SHEET:	2 OF 2