

- A. GENERAL: Pre-assemble building fabricated from low maintenance, lightweight corrosive resistant aluminum (factory fabricated). Building exterior shall have no exposed fasteners.
- 1 DIMENSIONS: 4'-0" wide x 6'-0" long, 90" interior ceiling height and 115 3/8" nominal outside height.
- 2 FRAME CONSTRUCTION: Provide structural framing of 6063-T6 aluminum alloy extrusions. Members shall have an Quaker Bronze or White finish. Connections shall be fastened internally to framing systems using mechanical fasteners or MIG welded where necessary. Exposed fasteners on framing system are not acceptable.
- 3 BASE/FLOOR: Building shall be constructed on a 4" high steel angle base frame encapsulated with a protective undercoating paint. Floor shall be comprised of 1/8" aluminum tread plate finished floor.
- 4 WALL PANELS: Exterior shall be .032 Quaker Bronze or White aluminum, 2 3/4" polyiso insulation (R-18) and .032 interior Quaker Bronze or White aluminum. Overall thickness of panel shall be 3".
- 5 CEILING: Interior ceiling shall be a panel system providing smooth flat interior, constructed from 20 ga pre-finished white steel with polyiso insulation (R-6.5) above.
- 6 HIP ROOF: Standing seam hip roof shall be constructed using a 14 ga galvanealed frame system with 24 ga interlocking pan sections. Sections are 1-3/4" high. Roof shall provide perimeter 4" overhang and drain into full perimeter gutter and down spout system. Roof / Fascia color shall be determined from manufacturer's standard selection color chart.
- 7 WINDOWS: Fixed windows shall be single pane 1/4" (6mm) clear tempered safety glass. (Qty-1) Sliding window shall have aluminum frame and 1/4" clear tempered safety glass, insect screen, and locking device. Glass shall be glazed within wall system extrusions and not be fastened to exterior wall. Glass sealed with concealed gasket system. Slide window frame same color as building.
- 8 DOOR: Sliding door shall be extruded aluminum frame, half glass (single pane 1/4" (6mm) clear tempered safety glass), top hung style using an overhead track and heavy duty ball bearing nylon tires with steel hub. Door shall be supplied with mortise hook bolt lockset with removable cylinder. Door same color as building.
- 9 ELECTRICAL: Building shall be wired according to N.E.C. standards. Load center shall be 125 amp main lug, 120/240 volt unit with 8/16 open circuits. Wiring shall be within surface mounted EMT conduit, and included shall be (1) GFI duplex receptacle with tester.
- 10 LIGHTING: Lighting shall be a 4' LED light with pull type switch.
- 11 HVAC: AC Thru-wall; 6,000 Cooling BTU/hr, 115 Volts, 12.1 E.E.R., digital remote control, auto air sweep swing louvers, 3 cool / 3 fan speeds, 4-way air flow control, auto-control and auto-restart, 24-hour timer.
- 12 COUNTER: Full width 18" deep by 3/4" white melamine work space counter. Supplied with counter top drop wire grommet(s).
- 13 HEATER: Heater shall be a wall mount electric unit with fan forced operation, 1500w /5120 BTU, 120V and thermostat in an enamel coated 20 gauge steel cabinet.



Notice - Twin Modular Services Inc. claims proprietary rights in the information disclosed on this drawing. It is issued in confidence for engineering information only and may not be used, in whole or in part, to manufacture anything whether or not shown hereon, reproduced or disclosed to anyone without direct written permission from Twin Modular Services Inc.

CUSTOMER APPROVAL

THESE DRAWINGS AND SPECIFICATIONS HAVE BEEN PRODUCED IN ACCORDANCE WITH TWIN MODULAR SERVICES INC. PROPOSAL AND THE PROJECT DESIGN. THE PROJECT WILL BE MANUFACTURED IN ACCORDANCE TO THIS INFORMATION AS SUBMITTED. THE SECURING OF BUILDING PERMITS AND COMPLIANCE WITH APPROPRIATE BUILDING CODES IS THE RESPONSIBILITY OF THE PURCHASER OF THE BUILDING AND NOT THE RESPONSIBILITY OF TWIN MODULAR SERVICES INC..

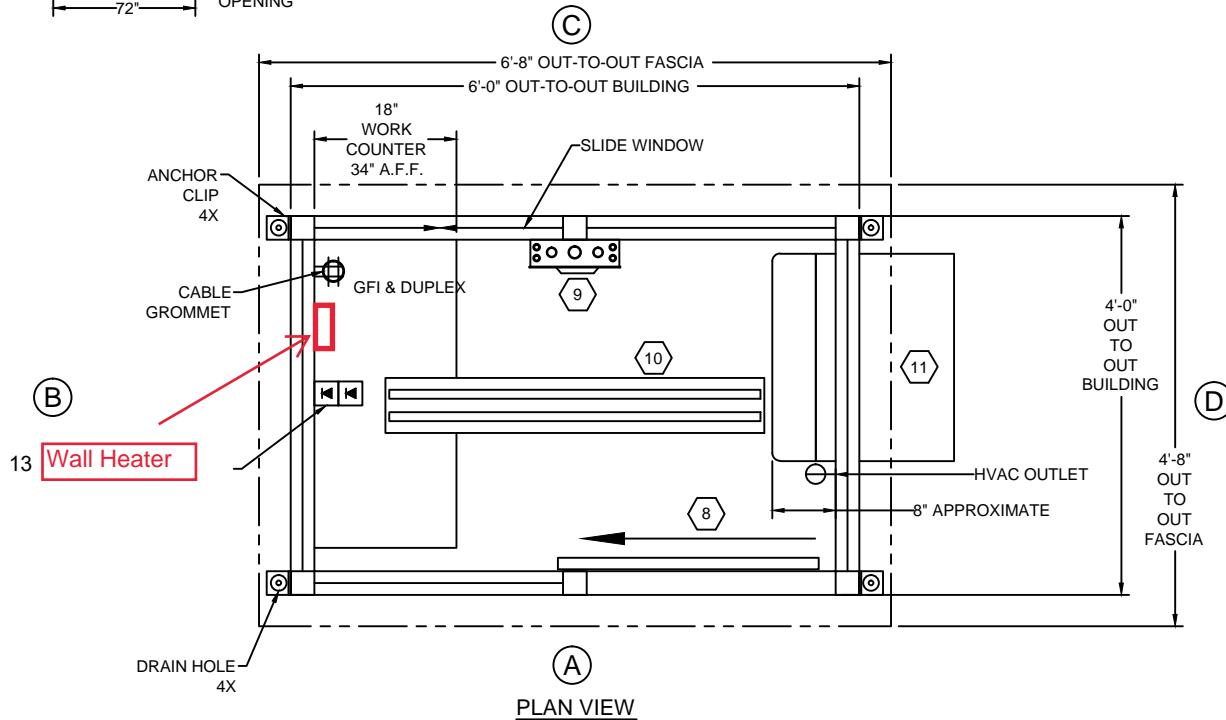
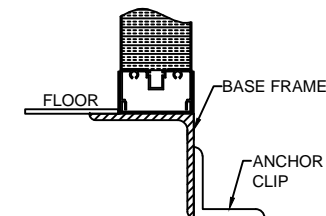
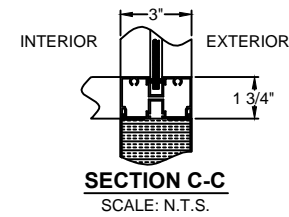
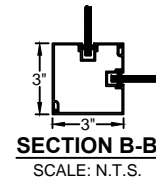
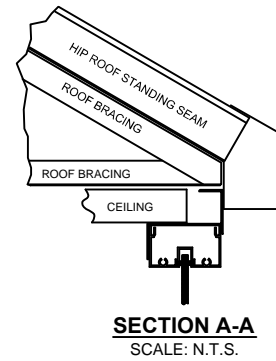
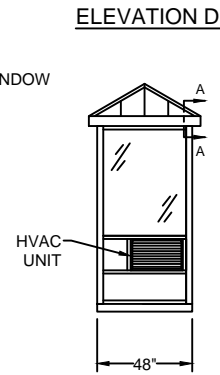
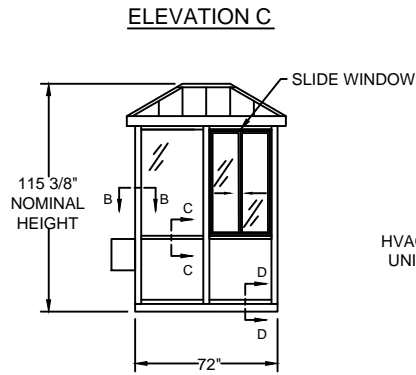
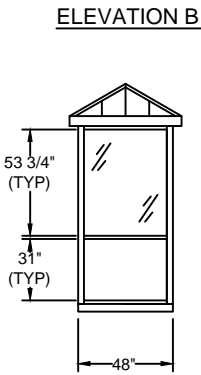
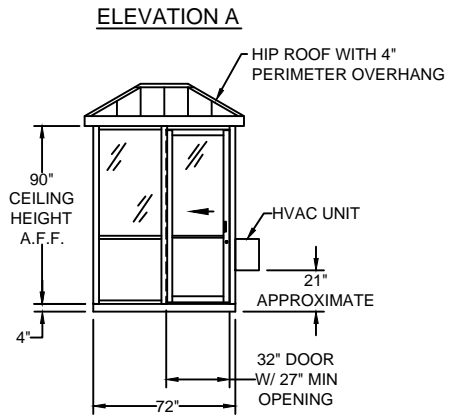
- APPROVED AS SUBMITTED
- APPROVED AS NOTED
- REVISE AND RESUBMIT

SIGNED: _____ DATE: _____

REVISION STATUS OF SHEETS		
-	-	REV
2	1	SH

CERTIFICATION

TITLE:	4'-0" X 6'-0" ALUMINUM BUILDING
JOB NO:	TBD
QUOTE NO:	-
LOCATION:	TBD
MOD NO:	46GBALSDH
COLOR:	SEE SPECIFICATIONS
DATE:	03.16.18
DRAWN BY:	CDA
SCALE:	NOT TO SCALE
SHEET:	1 OF 2



CUSTOMER APPROVAL

THESE DRAWINGS AND SPECIFICATIONS HAVE BEEN PRODUCED IN ACCORDANCE WITH TWIN MODULAR SERVICES INC. PROPOSAL AND THE PROJECT DESIGN. THE PROJECT WILL BE MANUFACTURED IN ACCORDANCE TO THIS INFORMATION AS SUBMITTED. THE SECURING OF BUILDING PERMITS AND COMPLIANCE WITH APPROPRIATE BUILDING CODES IS THE RESPONSIBILITY OF THE PURCHASER OF THE BUILDING AND NOT THE RESPONSIBILITY OF TWIN MODULAR SERVICES INC..

- APPROVED AS SUBMITTED
- APPROVED AS NOTED
- REVISE AND RESUBMIT

SIGNED: _____ DATE: _____



Notice - Twin Modular Services Inc. claims proprietary rights in the information disclosed on this drawing. It is issued in confidence for engineering information only and may not be used, in whole or in part, to manufacture anything whether or not shown hereon, reproduced or disclosed to anyone without direct written permission from Twin Modular Services Inc.

TITLE: 4'-0" X 6'-0"
ALUMINUM BUILDING

JOB NO: TBD

QUOTE NO: -

LOCATION: TBD

MOD NO: 46GBALSDH

COLOR: SEE SPECIFICATIONS

DATE: 03.16.18

DRAWN BY: CDA

SCALE: NOT TO SCALE

SHEET: 2 OF 2

CERTIFICATION