

GENERAL BUILDING SPECIFICATIONS: 4' x 6' Booth-Model#46GBAL2SD-TW: (2)Sliding doors-White

- A. GENERAL: Pre-assemble building fabricated from low maintenance, lightweight corrosive resistant aluminum (factory fabricated). Building exterior shall have no exposed fasteners.
- 1 DIMENSIONS: 4'-0" wide x 6'-0" long, 90" interior ceiling height and 98 1/2" nominal outside height.
- 2 FRAME CONSTRUCTION: Provide structural framing of 6063-T6 aluminum alloy extrusions. Members shall have a White finish. Connections shall be fastened internally to framing systems using mechanical fasteners or MIG welded where necessary. Exposed fasteners on framing system are not acceptable.
- 3 BASE/FLOOR: Building shall be constructed on a 4" mechanical steel tube base frame encapsulated with a protective undercoating paint. Floor shall be comprised of 1/8" aluminum tread plate finished floor. Base frame shall be provided with forklift pockets, see note 13 below.
- 4 WALL PANELS: Exterior shall be .032 Austin White finish. 2 3/4" polyiso insulation (R-18) and .032 interior White finish. Overall thickness of panel shall be 3".
- 5 CEILING/ROOF: Roof shall be constructed using galvanized 20 ga, G-60 interlocking pan sections. Sections shall be 3" high with varying widths. Roof shall drain into full perimeter gutter system. Interior ceiling shall be a panel system providing smooth flat interior, constructed from 20 ga pre-finished white steel with 1" polyiso insulation (R-6.5) above.
- 6 WINDOWS: Fixed windows shall be single pane 1/4" clear tempered safety glass. (Qty-1) Sliding window shall have aluminum frame and 1/4" clear tempered safety glass, insect screen, and locking device. Glass shall be glazed within wall system extrusions and not be fastened to exterior wall. Glass sealed with concealed gasket system. Slide window frame same color as building. WINDOWS START 42" ABOVE FINISH FLOOR.
- 7 DOOR: (Qty-2) Sliding door shall be extruded aluminum frame, half glass (single pane 1/4" clear tempered safety glass), top hung style using an overhead track and heavy duty ball bearing nylon tires with steel hub. Door shall be supplied with mortise hook bolt lockset with removable cylinder and interior thumb turn, pull handles, and aluminum threshold. Door same color as building.
- 8 ELECTRICAL: Building shall be wired according to N.E.C. standards. Load center shall be a 125 amp main lug type, 120/240 volt unit with 6/12 open circuits. Wiring shall be within surface mounted EMT conduit, and included shall be (qty-1) GFI duplex receptacle with tester. (Qty-1) Receptacle shall be installed for a 115V air conditioner.
- 9 LIGHTING: Interior lighting shall be a 4' LED light 40w, with pull chain type switch.
- 10 HEATER: Heater shall be a wall mount electric unit with fan forced operation, 1500w /5120 BTU, 120V and thermostat in an enamel coated 20 gauge steel cabinet.
- 11 A/C UNIT: Air Conditioner shall be a thru wall; 115 volt built-in cooling unit, R-410a refrigerant, 10,000 BTU; 12.1 EER electronic controls with remote electronic digital thermostat, four-way air direction, 3 cool/3 fan only speeds.
- 12 COUNTER: Full width 24" deep by 3/4" white melamine work space counter. Supplied with counter top drop wire grommet(s). Counter height 40" A.F.F.
- 13 FORKLIFT POCKET: Forklift pockets to be provided on Elevations A and C of building.

CUSTOMER APPROVAL

THESE DRAWINGS AND SPECIFICATIONS HAVE BEEN PRODUCED IN ACCORDANCE WITH TWIN MODULAR SERVICES INC. PROPOSAL AND THE PROJECT DESIGN. THE PROJECT WILL BE MANUFACTURED IN ACCORDANCE TO THIS INFORMATION AS SUBMITTED. THE SECURING OF BUILDING PERMITS AND COMPLIANCE WITH APPROPRIATE BUILDING CODES IS THE RESPONSIBILITY OF THE PURCHASER OF THE BUILDING AND NOT THE RESPONSIBILITY OF TWIN MODULAR SERVICES

- ☐ APPROVED AS SUBMITTED
- ☐ APPROVED AS NOTED
- ☐ REVISE AND RESUBMIT

SIGNED: _____ DATE: _____

REVISION STATUS OF SHEETS		
-	-	REV
2	1	SH

CERTIFICATION



Twin Modular Services Inc.
 1001 Lower Landing Rd. Ste 607
 Blackwood, NJ 08012
 PHONE: 856-227-0057
 e-mail: info@guardboothonline.com
 www.guardboothonline.com

Notice - Twin Modular Services Inc. claims proprietary rights in the information disclosed on this drawing. It is issued in confidence for engineering information only and may not be used, in whole or in part, to manufacture anything whether or not shown hereon, reproduced or disclosed to anyone without direct written permission from Twin Modular Services Inc.

TITLE: 4'-0" X 6'-0"
 ALUMINUM BUILDING

JOB NO: _____

QUOTE NO: -

LOCATION: TBD

MOD NO: 46GBAL2SD-TW

COLOR: SEE SPECIFICATIONS

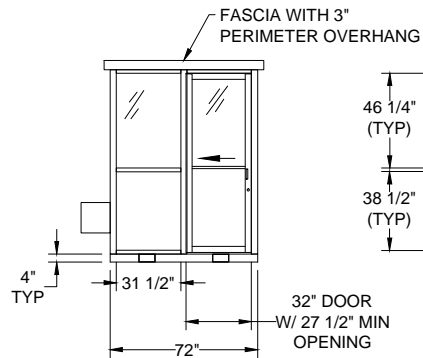
DATE: 09.22.22

DRAWN BY: CDA

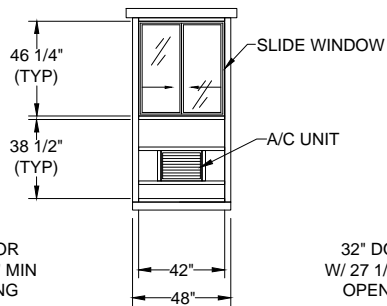
SCALE: N.T.S.

SHEET: 1 OF 2

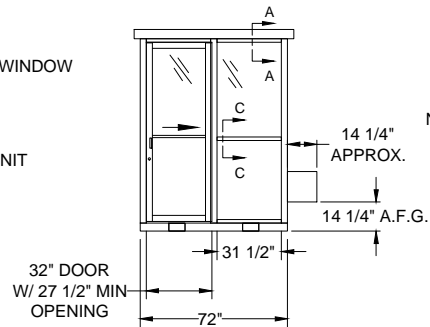
ELEVATION A



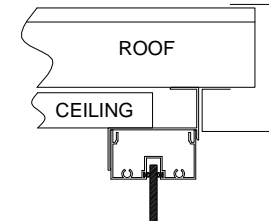
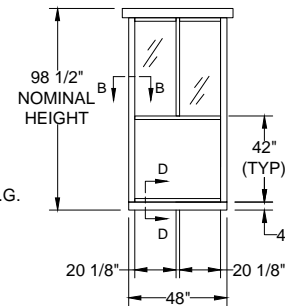
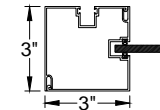
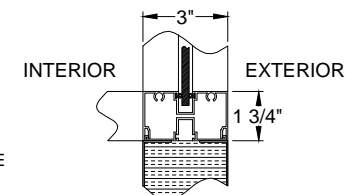
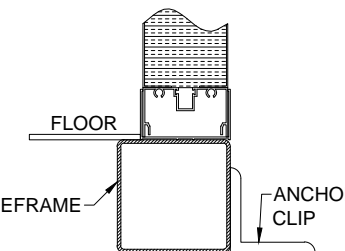
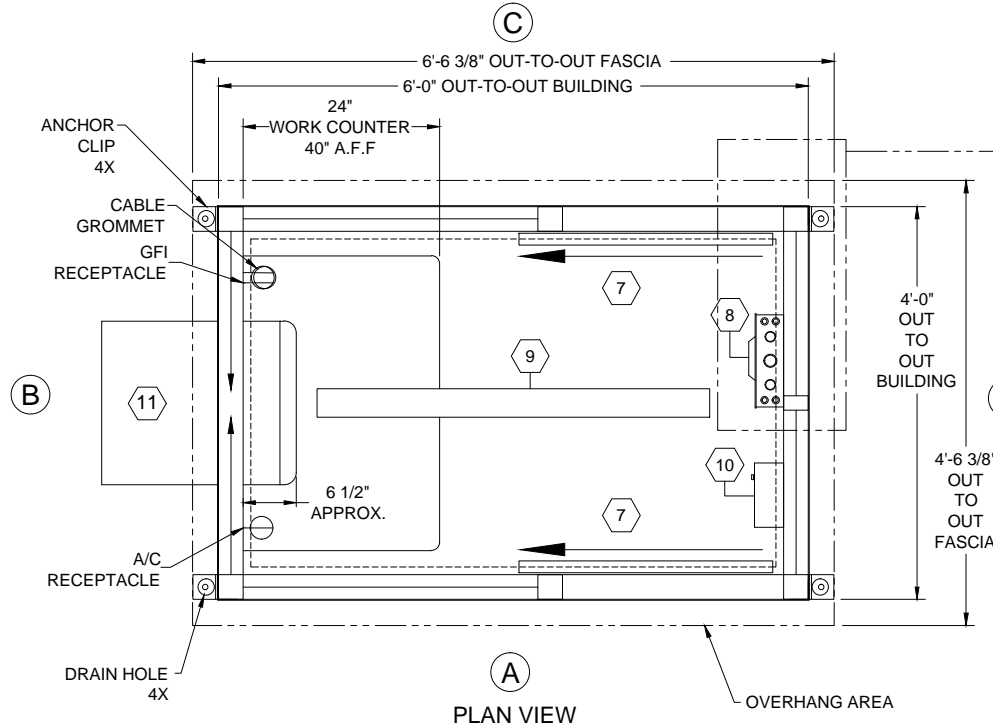
ELEVATION B



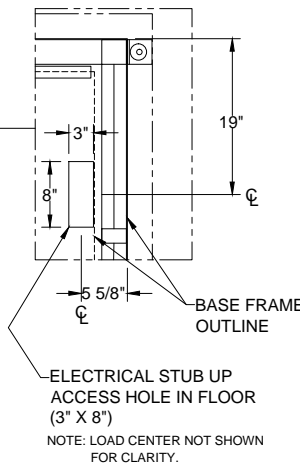
ELEVATION C



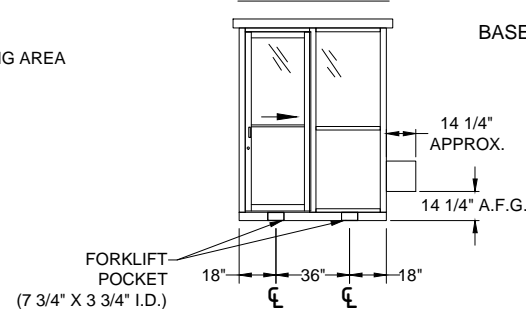
ELEVATION D

SECTION A-A
SCALE: N.T.S.SECTION B-B
SCALE: N.T.S.SECTION C-C
SCALE: N.T.S.SECTION D-D
SCALE: N.T.S.

PLAN VIEW



ELEVATION C



CUSTOMER APPROVAL

THESE DRAWINGS AND SPECIFICATIONS HAVE BEEN PRODUCED IN ACCORDANCE WITH TWIN MODULAR SERVICES INC. PROPOSAL AND THE PROJECT DESIGN. THE PROJECT WILL BE MANUFACTURED IN ACCORDANCE TO THIS INFORMATION AS SUBMITTED. THE SECURING OF BUILDING PERMITS AND COMPLIANCE WITH APPROPRIATE BUILDING CODES IS THE RESPONSIBILITY OF THE PURCHASER OF THE BUILDING AND NOT THE RESPONSIBILITY OF TWIN MODULAR SERVICES

- ☐ APPROVED AS SUBMITTED
☐ APPROVED AS NOTED
☐ REVISE AND RESUBMIT

SIGNED: _____ DATE: _____



Twin Modular Services Inc.
 1001 Lower Landing Rd. Ste 607
 Blackwood, NJ 08012
 PHONE: 856-227-0057
 e-mail: info@guardboothonline.com
 www.guardboothonline.com

Notice - Twin Modular Services Inc. claims proprietary rights in the information disclosed on this drawing. It is issued in confidence for engineering information only and may not be used, in whole or in part, to manufacture anything whether or not shown hereon, reproduced or disclosed to anyone without direct written permission from Twin Modular Services Inc.

TITLE: 4'-0" X 6'-0"
 ALUMINUM BUILDING

JOB NO:

QUOTE NO:

LOCATION: TBD.

MOD NO: 46GBAL2SD-TW

COLOR: SEE SPECIFICATIONS

DATE: 09.22.22

DRAWN BY: CDA

SCALE: N.T.S.

SHEET: 2 OF 2