

## GENERAL SHELTER SPECIFICATIONS: 8' x 15'-Model#:TALS815H2-TWO (2) OPENING-STANDING SEAM HIP ROOF

A. GENERAL: Unassembled modular shelter is fabricated from low maintenance, lightweight corrosive resistant aluminum (factory fabricated). Site assembly required.

- 1 DIMENSIONS: 7'-6" wide x 15'-0" long, 115" exterior height and 83" interior ceiling height.
- 2 FRAME: Provide structural framing of 6063-T6 aluminum alloy extrusions. Members shall have a Quaker Bronze, Clear Anodized or Austin White finish. Framing assembled using internally located mechanical fasteners. Exposed fasteners on framing system are not acceptable. Standard 7 3/4" ventilation space at bottom of unit. Two front openings.
- 3 CEILING: Interior ceiling shall be a panel system providing smooth flat interior, constructed from 20ga pre-finished white steel.
- 4 HIP ROOF: Standing seam hip roof shall be constructed using 14ga galv frame with 24ga interlocking pan sections. Sections are 1-1/2" high with varying widths. Color shall be determined from manufacturers standard color selection chart. Roof shall drain into full perimeter gutter system with drain holes.
- 5 WINDOWS: Fixed windows are single pane 1/4" clear tempered safety glass, glazed within wall system extrusions and not fastened to exterior wall. Glass sealed with concealed gasket system.
- 6 ANCHORING: Shelter installation requires concrete pad to be 12" minimum larger than shelter in both length and width dimensions. Pad must be level within 1/2" over length and width of structure. Shelter to be anchored to pad using height adjustable aluminum boot and anchored down using 1/4" X 1 7/8" Hilti Kwik Hus-EZ screw anchors.
- 7 BENCH: (Qty-1) Full length (two-piece) anodized aluminum bench system includes aluminum plank bench and aluminum plank backrest, end caps, brackets and hardware. Bench shall be shipped loose, and installed by others in the field.

INSTALLATION: Unit knocked down and crated, off loaded and installed by others.



Twin Modular Services Inc.  
1001 Lower Landing Rd. Ste 607  
Blackwood, NJ. 08012  
Ph: 856-227-0057  
e-mail: info@guardboothonline.com  
www.guardboothonline.com

Notice - Twin Modular Services Inc. claims proprietary rights in the information disclosed on this drawing. It is issued in confidence for engineering information only and may not be used, in whole or in part, to manufacture anything whether or not shown hereon, reproduced or disclosed to anyone without direct written permission from Twin Modular Services Inc.

### CUSTOMER APPROVAL

THESE DRAWINGS AND SPECIFICATIONS HAVE BEEN PRODUCED IN ACCORDANCE WITH TWIN MODULAR SERVICES INC. PROPOSAL AND THE PROJECT DESIGN. THE PROJECT WILL BE MANUFACTURED IN ACCORDANCE TO THIS INFORMATION AS SUBMITTED. THE SECURING OF BUILDING PERMITS AND COMPLIANCE WITH APPROPRIATE BUILDING CODES IS THE RESPONSIBILITY OF THE PURCHASER OF THE BUILDING AND NOT THE RESPONSIBILITY OF TWIN MODULAR SERVICES INC.

- ☐ APPROVED AS SUBMITTED  
☐ APPROVED AS NOTED  
☐ REVISE AND RESUBMIT

SIGNED: \_\_\_\_\_ DATE: \_\_\_\_\_

CERTIFICATION

TITLE: 7'-6" X 15'-0"  
ALUMINUM SHELTER

JOB NO: \_\_\_\_\_

QUOTE NO: \_\_\_\_\_

LOCATION: TBD

MOD NO: TALS815H2

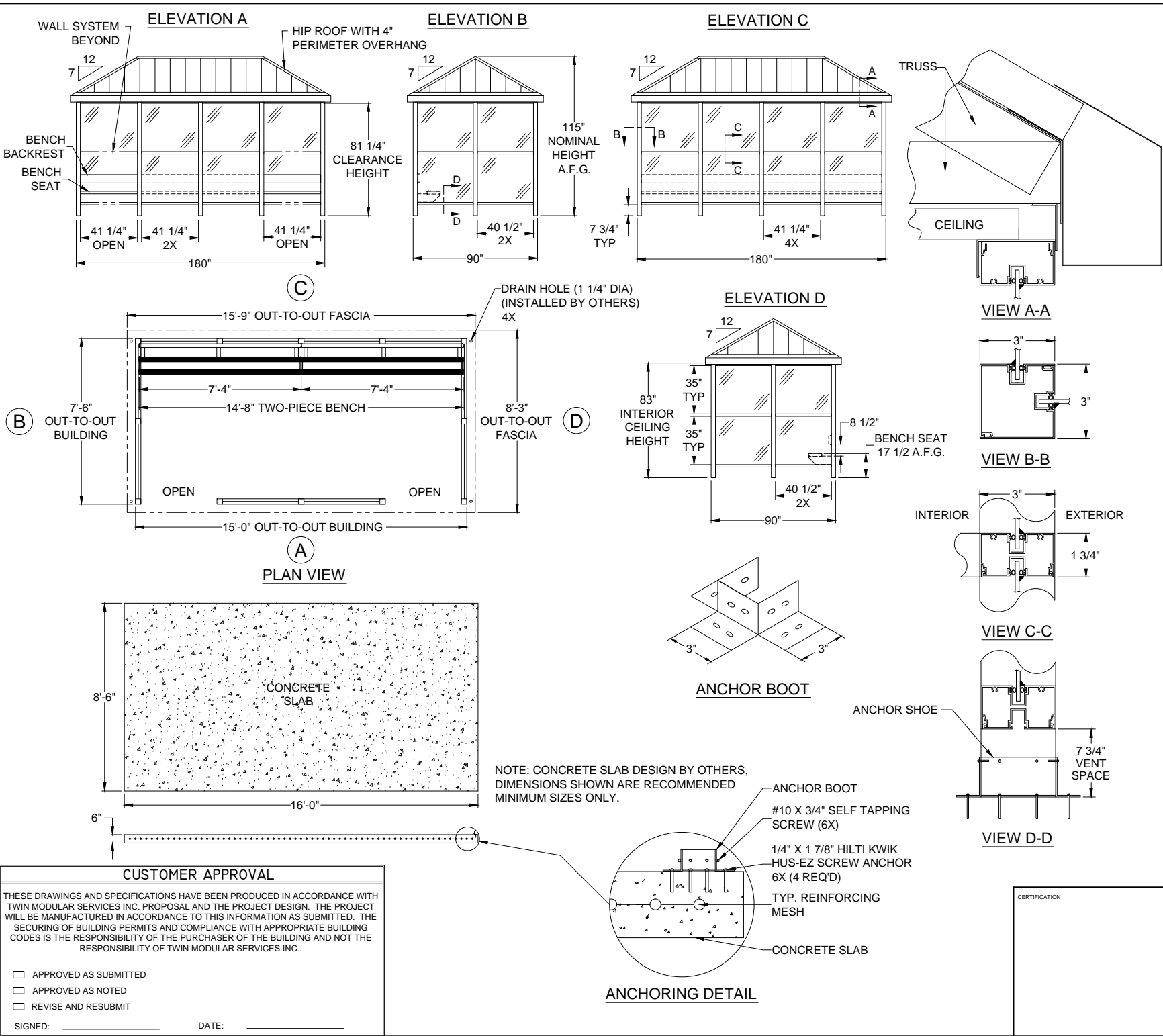
COLOR: SEE SPECIFICATIONS

DATE: \_\_\_\_\_

DRAWN BY: JRG

SCALE: N.T.S.

SHEET: 1 OF 2



Twin Modular Services Inc.  
1001 Lower Landing Rd. Ste 607  
Blackwood, NJ. 08012  
Ph: 856-227-0057  
e-mail: [info@guardboothonline.com](mailto:info@guardboothonline.com)  
[www.guardboothonline.com](http://www.guardboothonline.com)

Notice - Twin Modular Services Inc., LLC claims proprietary rights in the information disclosed on this drawing. It is issued in confidence for engineering information only and may not be used, in whole or in part, to manufacture anything whether or not shown hereon, reproduced or disclosed to anyone without direct written permission from Twin Modular Services Inc.

TITLE:	7'-6" X 15'-0" ALUMINUM SHELTER
JOB NO:	
QUOTE NO:	
LOCATION:	TBD
MOD NO:	TALS815H2
COLOR:	SEE SPECIFICATIONS
DATE:	
DRAWN BY:	JRG
SCALE:	N.T.S.
SHEET:	2 OF 2