

LOADS & CODES:

DESIGN CODES:

- 2018 INTERNATIONAL BUILDING CODE
 - (CHAPTER 16 - STRUCTURAL DESIGN)
 - (CHAPTER 24 - GLASS AND GLAZING)

STRUCTURAL LOADS :

BUILDING OCCUPANCY CATEGORY: II
 FLOOR LIVE LOAD: N/A PSF (FLOOR BY OTHERS IN THE FIELD)
 ROOF LIVE LOAD: ___ PSF
 GROUND SNOW LOAD: ___ PSF
 FLAT ROOF SNOW LOAD: ___ PSF
 SNOW IMPORTANCE FACTOR: ___
 SNOW THERMAL FACTOR: ___
 SNOW EXPOSURE FACTOR: ___

WIND LOADS:

Vult: ___ MPH
 Vasd: ___ MPH
 WIND EXPOSURE: _
 INTERNAL PRESSURE COEFFICIENT: +/- ___
 BUILDING PARTIALLY ENCLOSED

SEISMIC IMPORTANCE FACTOR: ___

Ss = ___

S1 = ___

SITE CLASS: _ (ASSUMED)

Sds = ___

Sd1 = ___

SEISMIC DESIGN CATEGORY: _

SEISMIC FORCE RESISTING SYSTEM: LIGHT FRAMED BEARING WALL SYSTEM

DESIGN SEISMIC LOAD = ___

R = _

EQUIVALENT LATERAL FORCE PROCEDURE

GENERAL SHELTER SPECIFICATIONS: 5' x 15'-One (1) Front Opening Model#: TALS515F1-ADA Bench

A. GENERAL:

Unassembled modular shelter is fabricated from low maintenance, lightweight corrosive resistant aluminum (factory fabricated). Site assembly required.

1

DIMENSIONS:

5'-0" wide x 15'-0" long, 87 1/2" exterior height and 83" interior ceiling height.

2

FRAME:

6063-T6 aluminum alloy extrusions with Quaker Bronze finish. Framing assembled using internally located mechanical fasteners. Exposed fasteners on framing system are not acceptable. 7 3/4" ventilation space at bottom of unit. One(1) Front Opening.

3

ROOF/CEILING:

Exterior roof shall be constructed using galvanized 20GA , G-60 interlocking pan sections. Sections shall be 3" high with varying widths. Roof shall drain into full perimeter gutter system. Interior ceiling shall be a panel system providing smooth flat interior, constructed from 20GA pre-finished white steel able to support optional lighting.

4

WINDOWS:

Fixed windows are single pane 1/4" minimum clear tempered safety glass, glazed within wall system extrusions and not fastened to exterior wall. Glass sealed with concealed gasket system.

5

ANCHORING:

Shelter installation requires concrete pad to be 12" minimum larger than shelter in both length and width dimensions. Pad must be level within 1/2" over length and width of structure. Shelter to be anchored to pad using height adjustable aluminum boot and anchored down using 1/4" X 2 5/8" HILTI KIWK HUS-EZ screw anchors.

6

BENCH:

(Qty-1) Bronze anodized aluminum bench (two-piece) with back rest shall be supplied, shipped loose, and installed by others in the field. Aluminum bench system includes aluminum plank bench, plank backrest, end caps, brackets and hardware. Bench size allows for shelter to be ADA compliant.

INSTALLATION:

Unit is knocked down and crated, off loaded and installed by others.

CUSTOMER APPROVAL

THESE DRAWINGS AND SPECIFICATIONS HAVE BEEN PRODUCED IN ACCORDANCE WITH TWIN MODULAR SERVICES INC. PROPOSAL AND THE PROJECT DESIGN. THE PROJECT WILL BE MANUFACTURED IN ACCORDANCE TO THIS INFORMATION AS SUBMITTED. THE SECURING OF BUILDING PERMITS AND COMPLIANCE WITH APPROPRIATE BUILDING CODES IS THE RESPONSIBILITY OF THE PURCHASER OF THE BUILDING AND NOT THE RESPONSIBILITY OF TWIN MODULAR SERVICES

- APPROVED AS SUBMITTED
 APPROVED AS NOTED
 REVISE AND RESUBMIT

SIGNED: _____ DATE: _____

REVISION STATUS OF SHEETS				
	-	-	-	REV
	4	3	2	1 SH

CERTIFICATION



Twin Modular Services Inc.

1001 Lower Landing Rd. Ste 607
 Blackwood, NJ 08012
 PHONE: 856-227-0057
 e-mail: info@guardboothonline.com
 www.guardboothonline.com

Notice - Twin Modular Services Inc. claims proprietary rights in the information disclosed on this drawing. It is issued in confidence for engineering information only and may not be used, in whole or in part, to manufacture anything whether or not shown hereon, reproduced or disclosed to anyone without direct written permission from Twin Modular Services Inc.

TITLE: 5'-0" X 15'-0"

ALUMINUM SHELTER

JOB NO: TBD

QUOTE NO: -

LOCATION: TBD

MOD NO: TALS515F1

COLOR: SEE SPECIFICATIONS

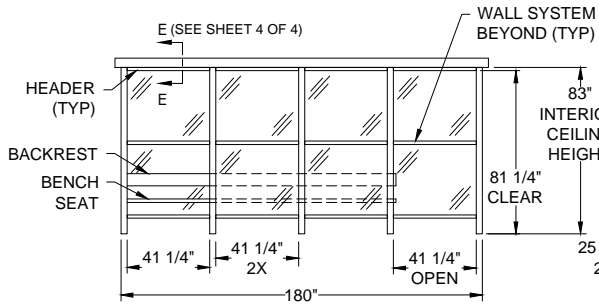
DATE: 01.17.22

DRAWN BY: CDA

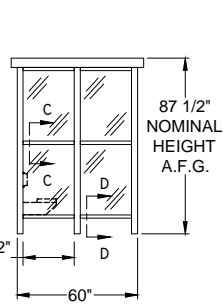
SCALE: N.T.S.

SHEET: 1 OF 4

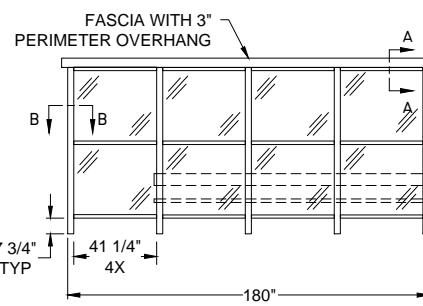
ELEVATION A



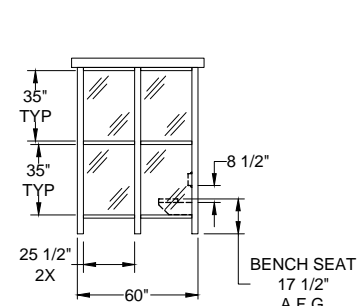
ELEVATION B



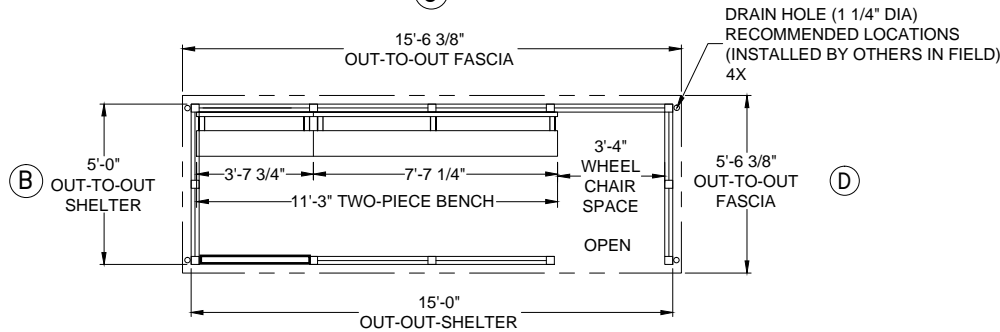
ELEVATION C



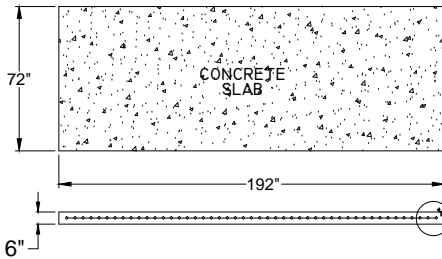
ELEVATION D



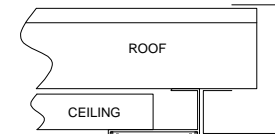
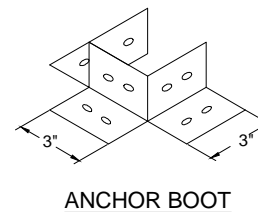
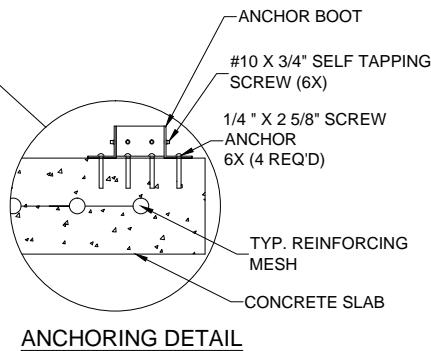
Ⓒ



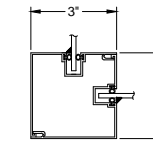
PLAN VIEW



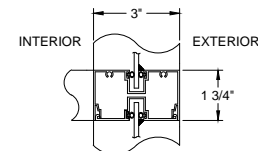
NOTE: CONCRETE SLAB DESIGN BY OTHERS-DIMENSIONS SHOWN ARE RECOMMENDED MIN. SIZES ONLY



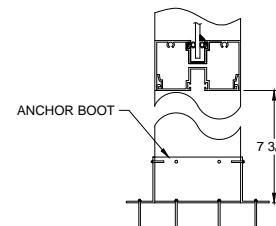
SECTION A-A



SECTION B-B



SECTION C-C



SECTION D-D

CERTIFICATION

CUSTOMER APPROVAL

THESE DRAWINGS AND SPECIFICATIONS HAVE BEEN PRODUCED IN ACCORDANCE WITH TWIN MODULAR SERVICES INC. PROPOSAL AND THE PROJECT DESIGN. THE PROJECT WILL BE MANUFACTURED IN ACCORDANCE TO THIS INFORMATION AS SUBMITTED. THE SECURING OF BUILDING PERMITS AND COMPLIANCE WITH APPROPRIATE BUILDING CODES IS THE RESPONSIBILITY OF THE PURCHASER OF THE BUILDING AND NOT THE RESPONSIBILITY OF TWIN MODULAR SERVICES

- APPROVED AS SUBMITTED
- APPROVED AS NOTED
- REVISE AND RESUBMIT

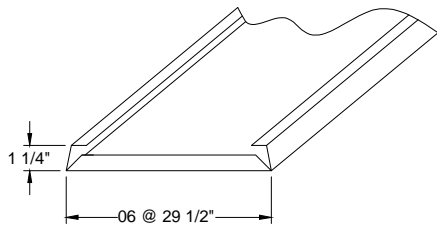
SIGNED: _____ DATE: _____



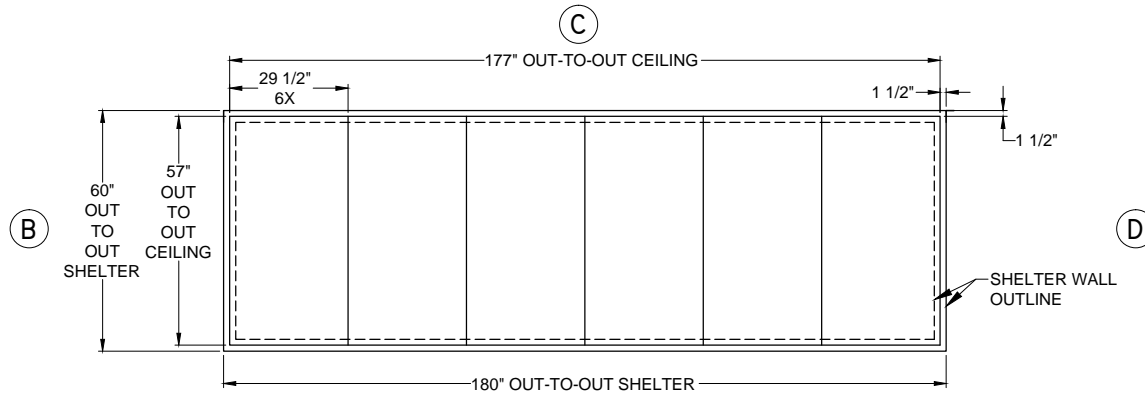
Twin Modular Services Inc.
 1001 Lower Landing Rd. Ste 607
 Blackwood, NJ 08012
 PHONE: 856-227-0057
 e-mail: info@guardboothonline.com
 www.guardboothonline.com

Notice - Twin Modular Services Inc. claims proprietary rights in the information disclosed on this drawing. It is issued in confidence for engineering information only and may not be used, in whole or in part, to manufacture anything whether or not shown herein, reproduced or disclosed to anyone without direct written permission from Twin Modular Services Inc.

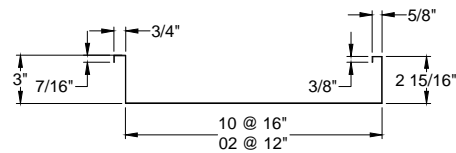
TITLE:	5'-0" X 15'-0" ALUMINUM SHELTER
JOB NO:	
QUOTE NO:	
LOCATION:	
MOD NO:	TALS515F1
COLOR:	SEE SPECIFICATIONS
DATE:	01.17.22
DRAWN BY:	CDA
SCALE:	N.T.S.
SHEET:	2 OF 4



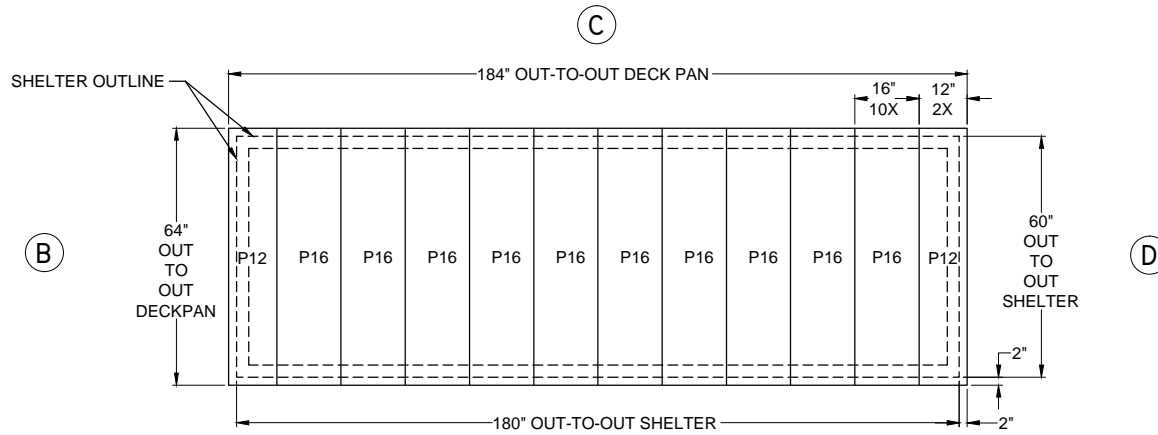
CEILING PAN PROFILE
MATERIAL: 20 GA STEEL (WHITE SMOOTH)



CEILING LAYOUT



DECK PAN PROFILE
MATERIAL: 20 GA STEEL (WHITE SMOOTH)



ROOF DECK PAN LAYOUT

CUSTOMER APPROVAL

THESE DRAWINGS AND SPECIFICATIONS HAVE BEEN PRODUCED IN ACCORDANCE WITH TWIN MODULAR SERVICES INC. PROPOSAL AND THE PROJECT DESIGN. THE PROJECT WILL BE MANUFACTURED IN ACCORDANCE TO THIS INFORMATION AS SUBMITTED. THE SECURING OF BUILDING PERMITS AND COMPLIANCE WITH APPROPRIATE BUILDING CODES IS THE RESPONSIBILITY OF THE PURCHASER OF THE BUILDING AND NOT THE RESPONSIBILITY OF TWIN MODULAR SERVICES

- APPROVED AS SUBMITTED
- APPROVED AS NOTED
- REVISE AND RESUBMIT

SIGNED: _____ DATE: _____

CERTIFICATION



Twin Modular Services Inc.
 1001 Lower Landing Rd. Ste 607
 Blackwood, NJ 08012
 PHONE: 856-227-0057
 e-mail: info@guardboothonline.com
 www.guardboothonline.com

Notice - Twin Modular Services Inc. claims proprietary rights in the information disclosed on this drawing. It is issued in confidence for engineering information only and may not be used, in whole or in part, to manufacture anything whether or not shown hereon, reproduced or disclosed to anyone without direct written permission from Twin Modular Services Inc.

TITLE: 5'-0" X 15'-0"
 ALUMINUM SHELTER

JOB NO: TBD

QUOTE NO: -

LOCATION: PLAINFIELD, NJ

MOD NO: TALS515F21

COLOR: SEE SPECIFICATIONS

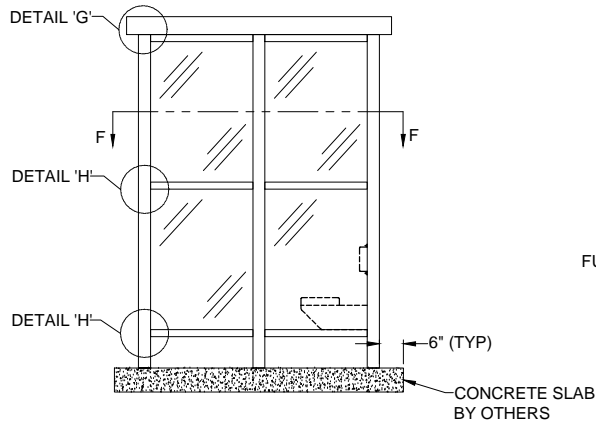
DATE: 01.17.22

DRAWN BY: CDA

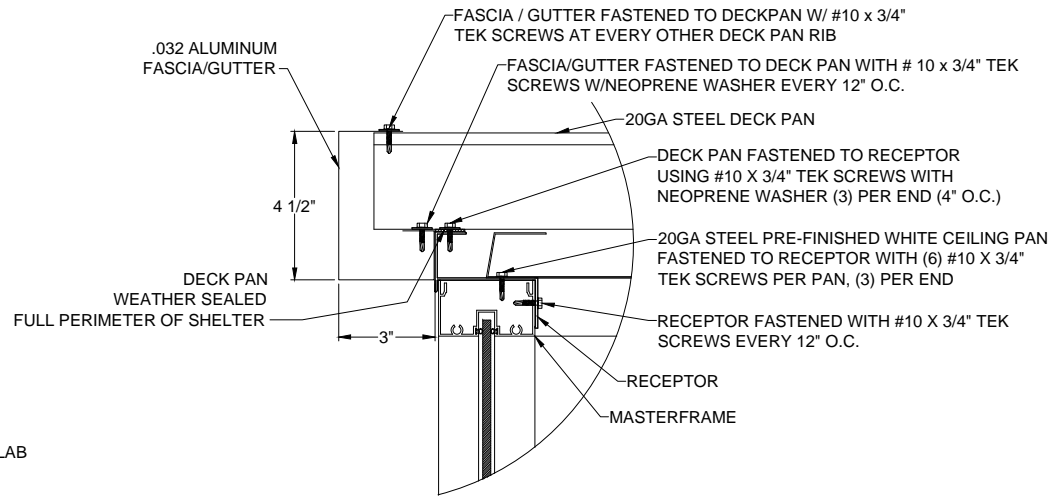
SCALE: N.T.S.

SHEET: 3 OF 4

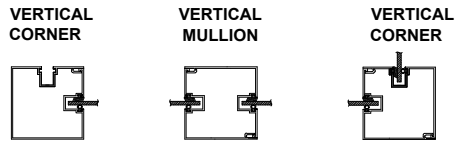
ELEVATION D



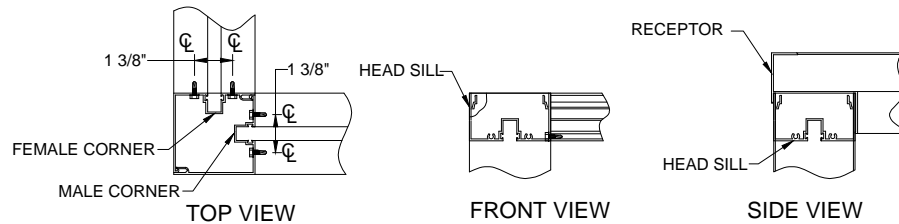
NOTE:
- DEAD LOAD OF SHELTER ON CONCRETE PAD MAXIMUM ___ LBS PER POST.



**SECTION E-E
(SEE SHEET 2 OF 4)**

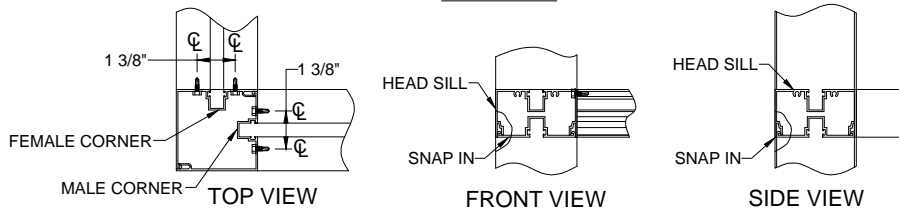


SECTION F-F



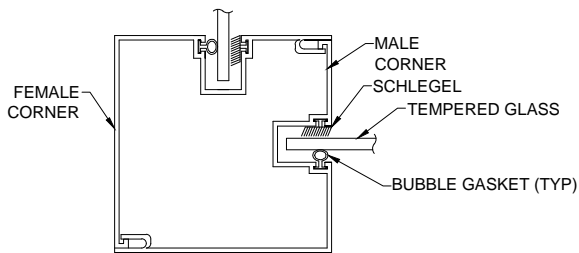
ALL FASTENERS ARE #10 SHEET METAL SCREW AT 1" LONG

DETAIL 'G'



ALL FASTENERS ARE #10 SHEET METAL SCREW AT 1" LONG

DETAIL 'H'



CORNER POST DETAIL



Twin Modular Services Inc.
1001 Lower Landing Rd. Ste 607
Blackwood, NJ 08012
PHONE: 856-227-0057
e-mail: info@guardboothonline.com
www.guardboothonline.com

Notice - Twin Modular Services Inc. claims proprietary rights in the information disclosed on this drawing. It is issued in confidence for engineering information only and may not be used, in whole or in part, to manufacture anything whether or not shown hereon, reproduced or disclosed to anyone without direct written permission from Twin Modular Services Inc.

TITLE:	5'-0" X 15'-0" ALUMINUM SHELTER
JOB NO:	TBD
QUOTE NO:	-
LOCATION:	TBD
MOD NO:	TALS515F1
COLOR:	SEE SPECIFICATIONS
DATE:	01.17.22
DRAWN BY:	CDA
SCALE:	N.T.S.
SHEET:	4 OF 4

CUSTOMER APPROVAL

THESE DRAWINGS AND SPECIFICATIONS HAVE BEEN PRODUCED IN ACCORDANCE WITH TWIN MODULAR SERVICES INC. PROPOSAL AND THE PROJECT DESIGN. THE PROJECT WILL BE MANUFACTURED IN ACCORDANCE TO THIS INFORMATION AS SUBMITTED. THE SECURING OF BUILDING PERMITS AND COMPLIANCE WITH APPROPRIATE BUILDING CODES IS THE RESPONSIBILITY OF THE PURCHASER OF THE BUILDING AND NOT THE RESPONSIBILITY OF TWIN MODULAR SERVICES

- APPROVED AS SUBMITTED
- APPROVED AS NOTED
- REVISE AND RESUBMIT

SIGNED: _____ DATE: _____

CERTIFICATION