

GENERAL SHELTER SPECIFICATIONS: (QTY- 1 SHELTER)

A. GENERAL: Unassembled modular shelter is fabricated from low maintenance, lightweight corrosive resistant aluminum (factory fabricated). Site assembly required.

- 1 DIMENSIONS: 5'-0" wide x 10'-0" long, 102 3/4" nominal exterior height. Minimum clearance height to be 80".
- 2 FRAME: Provide structural framing of 6063-T6 aluminum alloy extrusions with a Quaker Bronze finish. Framing assembled using internally located mechanical fasteners. Exposed fasteners on framing system are not acceptable. Standard 7 3/4" ventilation space at bottom of unit.
- 3 VAULTED HIP ROOF: Vaulted standing seam hip roof shall be constructed using 1/8" aluminum tube frame with 24ga interlocking pan sections. Sections are 1 1/2" high. Color to be determined. Roof drains into full perimeter extruded aluminum gutter with 3 3/8" high fascia system.
- 4 WINDOWS: Fixed windows are single pane 1/4" clear tempered safety glass, glazed within wall system extrusions and not fastened to exterior wall. Glass sealed with concealed gasket system.
- 5 ANCHORING: Shelter installation requires concrete pad to be 12" minimum larger than shelter in both length and width dimensions. Pad must be level within 1/2" over length and width of structure. Shelter to be anchored to pad using height adjustable aluminum boot and anchored down using 1/4" X 1 7/8" Hilti Kwik HUS-EZ screw anchors.
- 6 OPTIONAL BENCH: (Qty-1) Optional Full length bench-Bronze color-with back rest ,shipped loose, and installed by others in the field.

INSTALLATION: Unit is knocked down and crated, off loaded and installed by others.



Twin Modular Services Inc.
 1001 Lower Landing Rd. Ste 607
 Blackwood, NJ 08012
 PHONE: 856-227-0057
 e-mail: info@guardboothonline.com
 www.guardboothonline.com

Notice - Twin Modular Services Inc. claims proprietary rights in the information disclosed on this drawing. It is issued in confidence for engineering information only and may not be used, in whole or in part, to manufacture anything whether or not shown hereon, reproduced or disclosed to anyone without direct written permission from Twin Modular Services Inc.

| | |
|-----------|------------------------------------|
| TITLE: | 5'-0" X 10'-0" ALUMINUM SHELTER |
| JOB NO: | |
| QUOTE NO: | - |
| LOCATION: | |
| MOD NO: | TALS510H |
| COLOR: | SEE SPECIFICATIONS |
| DATE: | 09.30.22 |
| DRAWN BY: | JRG |
| SCALE: | N.T.S. |
| SHEET: | 1 OF 2 |

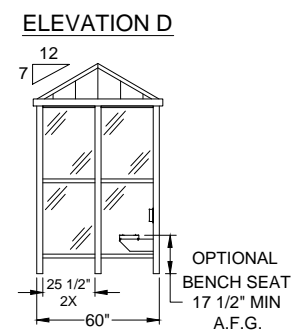
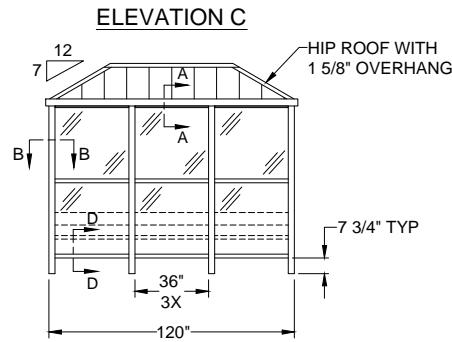
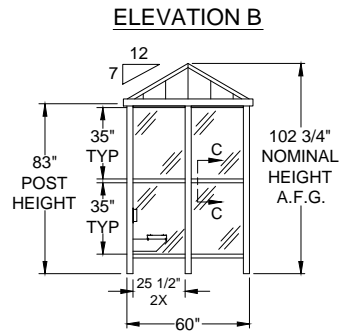
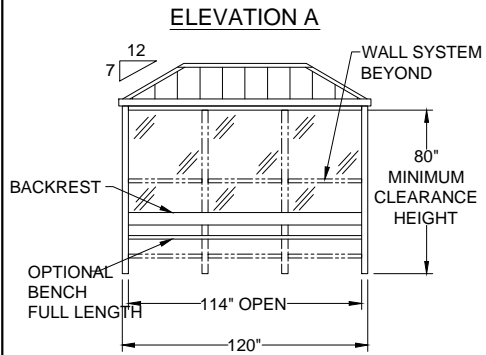
CUSTOMER APPROVAL

THESE DRAWINGS AND SPECIFICATIONS HAVE BEEN PRODUCED IN ACCORDANCE WITH TWIN MODULAR SERVICES INC. PROPOSAL AND THE PROJECT DESIGN. THE PROJECT WILL BE MANUFACTURED IN ACCORDANCE TO THIS INFORMATION AS SUBMITTED. THE SECURING OF BUILDING PERMITS AND COMPLIANCE WITH APPROPRIATE BUILDING CODES IS THE RESPONSIBILITY OF THE PURCHASER OF THE BUILDING AND NOT THE RESPONSIBILITY OF TWIN MODULAR SERVICES

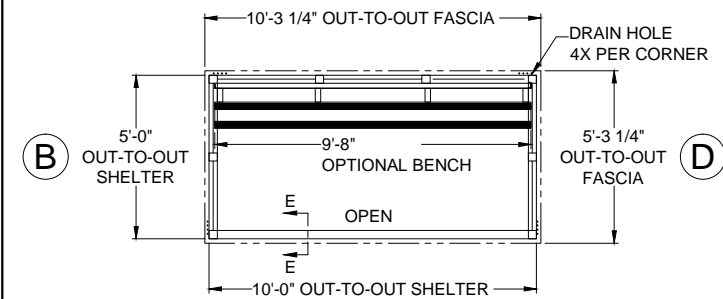
- APPROVED AS SUBMITTED
- APPROVED AS NOTED
- REVISE AND RESUBMIT

SIGNED: _____ DATE: _____

CERTIFICATION

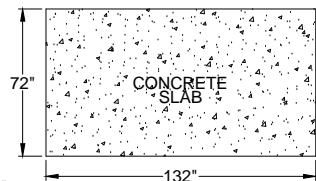


(C)



(A)

PLAN VIEW



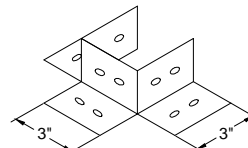
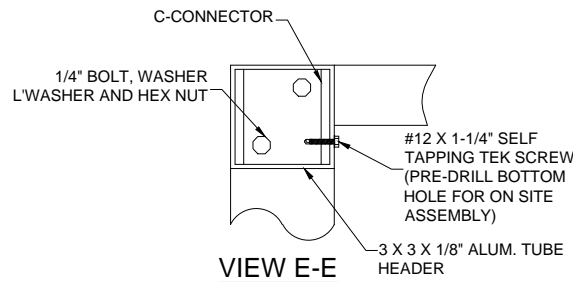
NOTE: CONCRETE SLAB DESIGN BY OTHERS-DIMENSIONS SHOWN ARE RECOMMENDED MIN. SIZES ONLY

CUSTOMER APPROVAL

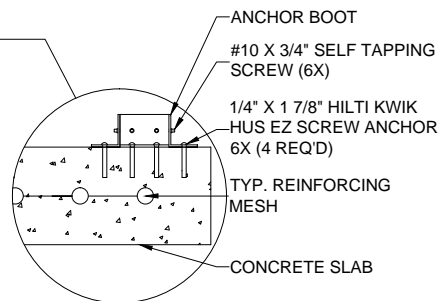
THESE DRAWINGS AND SPECIFICATIONS HAVE BEEN PRODUCED IN ACCORDANCE WITH TWIN MODULAR SERVICES INC. PROPOSAL AND THE PROJECT DESIGN. THE PROJECT WILL BE MANUFACTURED IN ACCORDANCE TO THIS INFORMATION AS SUBMITTED. THE SECURING OF BUILDING PERMITS AND COMPLIANCE WITH APPROPRIATE BUILDING CODES IS THE RESPONSIBILITY OF THE PURCHASER OF THE BUILDING AND NOT THE RESPONSIBILITY OF TWIN MODULAR SERVICES

- APPROVED AS SUBMITTED
- APPROVED AS NOTED
- REVISE AND RESUBMIT

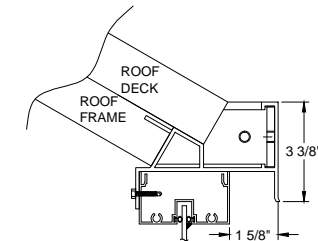
SIGNED: _____ DATE: _____



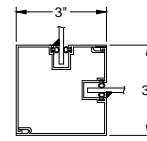
ANCHOR BOOT



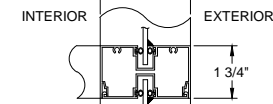
ANCHORING DETAIL



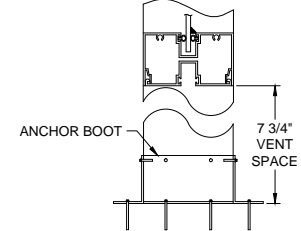
VIEW A-A



VIEW B-B



VIEW C-C



VIEW D-D

CERTIFICATION



Twin Modular Services Inc.
 1001 Lower Landing Rd. Ste 607
 Blackwood, NJ 08012
 PHONE: 856-227-0057
 e-mail: info@guardboothonline.com
 www.guardboothonline.com

Notice - Twin Modular Services Inc. claims proprietary rights in the information disclosed on this drawing. It is issued in confidence for engineering information only and may not be used, in whole or in part, to manufacture anything whether or not shown hereon, reproduced or disclosed to anyone without direct written permission from Twin Modular Services Inc.

| | |
|-----------|------------------------------------|
| TITLE: | 5'-0" X 10'-0" ALUMINUM SHELTER |
| JOB NO: | |
| QUOTE NO: | |
| LOCATION: | |
| MOD NO: | TALS510H |
| COLOR: | SEE SPECIFICATIONS |
| DATE: | 09.30.22 |
| DRAWN BY: | JRG |
| SCALE: | N.T.S. |
| SHEET: | 2 OF 2 |