

TYPICAL TWIN MODULAR SERVICES ALUMINUM BUILDING SPECIFICATIONS

- A. GENERAL: Pre-assemble building fabricated from low maintenance, lightweight corrosive resistant aluminum (factory fabricated). Building exterior shall have no exposed fasteners.
- 1 DIMENSIONS: 4'-0" wide x 6'-0" long, 90" interior ceiling height and 94 1/2" nominal outside height.
- 2 FRAME CONSTRUCTION: Provide structural framing of 6063-T6 aluminum alloy extrusions. Members shall have an Quaker Bronze finish. Connections shall be fastened internally to framing systems using mechanical fasteners or MIG welded where necessary. Exposed fasteners on framing system are not acceptable.
- 3 BASE/FLOOR: Building shall be constructed on a 4" high steel angle base frame encapsulated with a protective undercoating paint. Floor shall be comprised of 1/8" aluminum tread plate finished floor.
- 4 WALL PANELS: Exterior shall be .032 Quaker Bronze aluminum, 1 1/2" polyiso insulation (R-10) and .032 interior Quaker Bronze aluminum. Overall thickness of panel shall be 1 1/2".
- 5 CEILING/ROOF: Shall be constructed using hardboard factory coated FRP panel with white finish exterior and interior. Roof shall drain via perimeter drip edge.
- 6 WINDOWS: Fixed windows shall be single pane 1/4" (6mm) clear tempered safety glass. Glass shall be glazed within wall system extrusions and not be fastened to exterior wall. Glass sealed with concealed gasket system.
- 7 DOOR: Sliding door shall be extruded aluminum frame, half glass (single pane 1/4" (6mm) clear tempered safety glass), top hung style using an overhead track and heavy duty ball bearing nylon tires with steel hub. Door shall be supplied with mortise hook bolt lockset with removable cylinder. Door same color as building.
- 8 ELECTRICAL: Building shall be wired according to N.E.C. standards. A 15A/125V flanged inlet (Nema 5/15) weather proof shall be provided on the booth which can be powered by a standard 110V extension cord from power source by others. Wiring shall be within surface mounted EMT conduit, and included shall be (qty-1) GFI duplex receptacle with tester.
- 9 LIGHTING: Lighting shall be a 2' dual bulb fluorescent light with pull type switch with ground fault protection.
- 10 COUNTER: Full width 12" deep by 3/4" white melamine work space counter.

4X6ECONO #46ECONO



Twin Modular Services Inc.
 1001 Lower Landing Rd. Ste 607
 Blackwood, NJ. 08012
 Ph: 856-227-0057
 e-mail: info@guardboothonline.com
 WEBSITE: guardboothonline.com
 www.nfo@guardboothonline.com

Notice - Twin Modular Services Inc.
 claims proprietary rights in the information disclosed on this drawing. It is issued in confidence for engineering information only and may not be used, in whole or in part, to manufacture anything whether or not shown hereon, reproduced or disclosed to anyone without direct written permission from Twin Modular Services Inc.

TITLE:	4'-0" X 6'-0"
	ALUMINUM BUILDING
JOB NO:	
QUOTE NO:	
LOCATION:	
MOD NO:	46ECONO
COLOR:	SEE SPECIFICATIONS
DATE:	
DRAWN BY:	CDA
SCALE:	1/8" = 1'
SHEET:	1 OF 2

CUSTOMER APPROVAL

THESE DRAWINGS AND SPECIFICATIONS HAVE BEEN PRODUCED IN ACCORDANCE WITH TWIN MODULAR SERVICES INC PROPOSAL AND THE PROJECT DESIGN. THE PROJECT WILL BE MANUFACTURED IN ACCORDANCE TO THIS INFORMATION AS SUBMITTED. THE SECURING OF BUILDING PERMITS AND COMPLIANCE WITH APPROPRIATE BUILDING CODES IS THE RESPONSIBILITY OF THE PURCHASER OF THE BUILDING AND NOT THE RESPONSIBILITY OF TWIN MODULAR SERVICES INC..

- APPROVED AS SUBMITTED
- APPROVED AS NOTED
- REVISE AND RESUBMIT

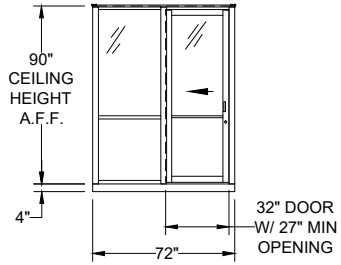
SIGNED: _____ DATE: _____



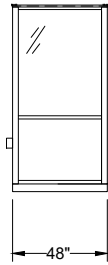
REVISION STATUS OF SHEETS		
-	-	REV
2	1	SH

CERTIFICATION

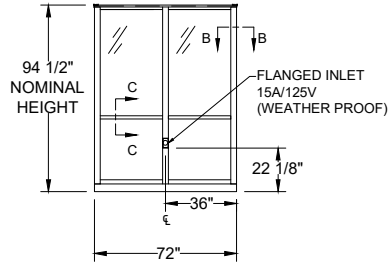
ELEVATION A



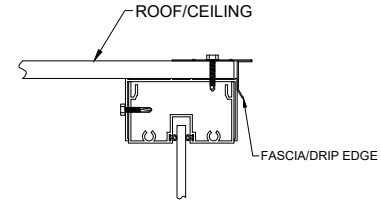
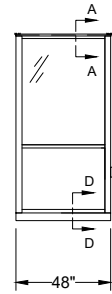
ELEVATION B



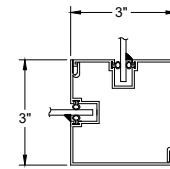
ELEVATION C



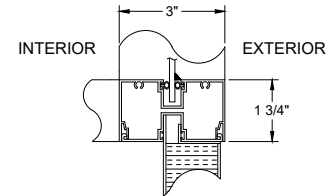
ELEVATION D



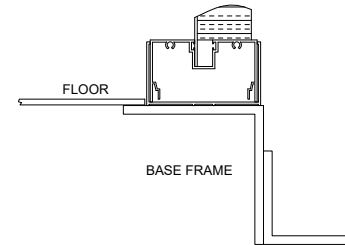
VIEW A-A



VIEW B-B

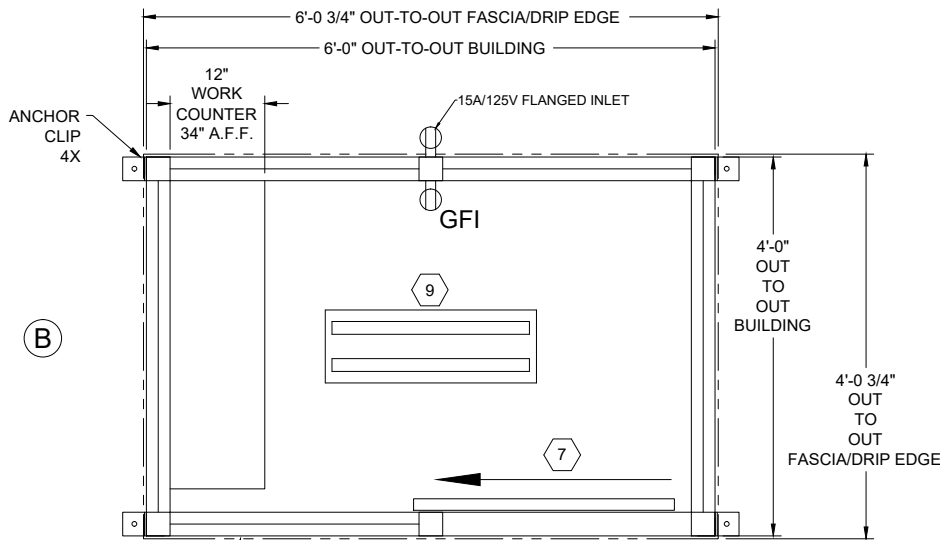


VIEW C-C



VIEW D-D

Ⓒ



Ⓐ

PLAN VIEW

4X6ECONO #46ECONO



Twin Modular Services Inc.
 1001 Lower Landing Rd. Ste 607
 Blackwood, NJ. 08012
 Ph: 856-227-0057
 e-mail: info@guardboothonline.com
 WEBSITE: guardboothonline.com
 www.nfo@guardboothonline.com

Notice - Twin Modular Services inc. claims proprietary rights in the information disclosed on this drawing. It is issued in confidence for engineering information only and may not be used, in whole or in part, to manufacture anything whether or not shown hereon, reproduced or disclosed to anyone without direct written permission from Twin Modular Services Inc.

TITLE:	4'-0" X 6'-0" ALUMINUM BUILDING
JOB NO:	
QUOTE NO:	
LOCATION:	
MOD NO:	46ECONO
COLOR:	SEE SPECIFICATIONS
DATE:	
DRAWN BY:	CDA
SCALE:	1/8" = 1'
SHEET:	2 OF 2

CUSTOMER APPROVAL

THESE DRAWINGS AND SPECIFICATIONS HAVE BEEN PRODUCED IN ACCORDANCE WITH TWIN MODULAR SERVICES INC PROPOSAL AND THE PROJECT DESIGN. THE PROJECT WILL BE MANUFACTURED IN ACCORDANCE TO THIS INFORMATION AS SUBMITTED. THE SECURING OF BUILDING PERMITS AND COMPLIANCE WITH APPROPRIATE BUILDING CODES IS THE RESPONSIBILITY OF THE PURCHASER OF THE BUILDING AND NOT THE RESPONSIBILITY OF TWIN MODULAR SERVICES INC..

- APPROVED AS SUBMITTED
- APPROVED AS NOTED
- REVISE AND RESUBMIT

SIGNED: _____ DATE: _____

CERTIFICATION