

GENERAL SHELTER SPECIFICATIONS:

- A. GENERAL: Unassembled modular shelter is fabricated from low maintenance, lightweight corrosive resistant aluminum (factory fabricated). Site assembly required.
- 1 DIMENSIONS: 5'-0" wide x 10'-0" long, 104 7/8" exterior height and 83" interior ceiling height.
- 2 FRAME: Provide structural framing of 6063-T6 aluminum alloy extrusions with Quaker Bronze finish. Connections shall be fastened internally to framing systems using mechanical fasteners or MIG welded where necessary. Exposed fasteners on framing system are not acceptable. Standard 7 3/4" ventilation space at bottom of unit. Additional Colors Available.
- 3 HIP ROOF: Standing seam hip roof shall be constructed using 14ga galvanealed frame with 24ga interlocking pan sections. Sections are 1-3/4" high with varying widths able to support 40 psf live load. Color shall be DARK BRONZE (50). Roof shall drain into full perimeter gutter.
- 4 CEILING: Interior ceiling shall be a panel system providing smooth flat interior, constructed from 20 ga pre-finished white steel able to support optional lighting or heat panels.
- 5 WINDOWS: Fixed windows are single pane 1/4" minimum clear tempered safety glass, glazed within wall system extrusions and not fastened to exterior wall. Glass sealed with concealed gasket system.
- 6 ANCHORING: Shelter installation requires concrete pad to be 12" minimum larger than shelter in both length and width dimensions. Pad must be level within 1/2" over length and width of structure. Shelter to be anchored to pad using height adjustable aluminum boot and anchored down using 1/4" x 1 7/8" HILTI KWIK HUS-EZ ANCHOR.
- 7 OPTIONAL BENCH: (Qty-1) Optional Full length or ADA bronze anodized bench with back rest ,shipped loose, and installed by others in the field.

INSTALLATION: Unit is knocked down and crated, off loaded and installed by others.



Twin Modular Services Inc.
1001 Lower Landing Rd. Ste 607
Blackwood, NJ. 08012
Ph: 856-227-0057
e-mail: info@guardboothonline.com
www.guardboothonline.com

Notice - Twin Modular Services Inc. claims proprietary rights in the information disclosed on this drawing. It is issued in confidence for engineering information only and may not be used, in whole or in part, to manufacture anything whether or not shown hereon, reproduced or disclosed to anyone without direct written permission from Twin Modular Services Inc.

TITLE: 5'-0" X 10'-0"
ALUMINUM SHELTER

JOB NO:

QUOTE NO:

LOCATION:

MOD NO: TALS510H1

COLOR: SEE SPECIFICATIONS

DATE: 01.02.20

DRAWN BY: TMK

SCALE: N.T.S.

SHEET: 1 OF 2

CERTIFICATION

DESIGN LOADS

WIND LOAD: 90 mph

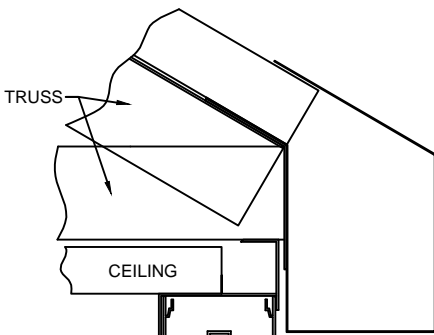
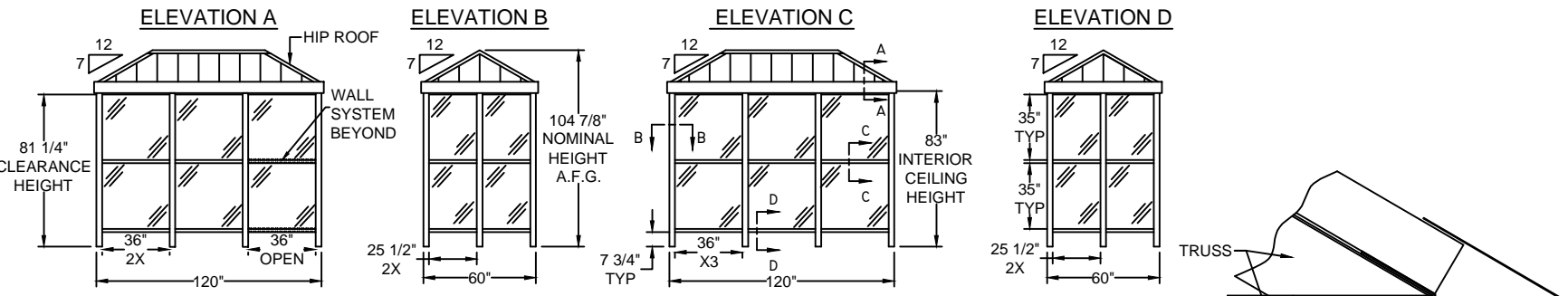
SNOW LOAD: 20 psf

CUSTOMER APPROVAL

THESE DRAWINGS AND SPECIFICATIONS HAVE BEEN PRODUCED IN ACCORDANCE WITH TWIN MODULAR SERVICES INC. PROPOSAL AND THE PROJECT DESIGN. THE PROJECT WILL BE MANUFACTURED IN ACCORDANCE TO THIS INFORMATION AS SUBMITTED. THE SECURING OF BUILDING PERMITS AND COMPLIANCE WITH APPROPRIATE BUILDING CODES IS THE RESPONSIBILITY OF THE PURCHASER OF THE BUILDING AND NOT THE RESPONSIBILITY OF TWIN MODULAR SERVICES INC.

- ☐ APPROVED AS SUBMITTED
☐ APPROVED AS NOTED
☐ REVISE AND RESUBMIT

SIGNED: _____ DATE: _____

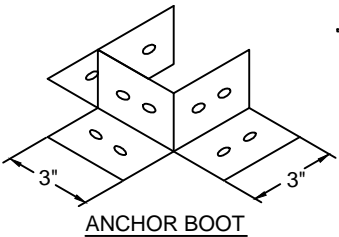
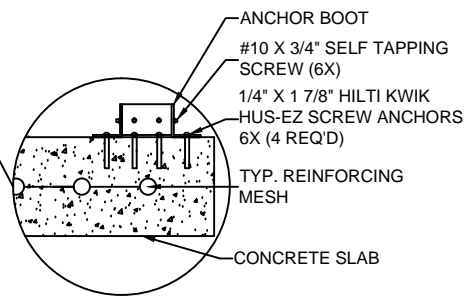
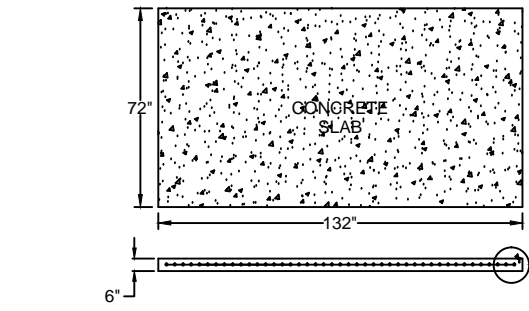
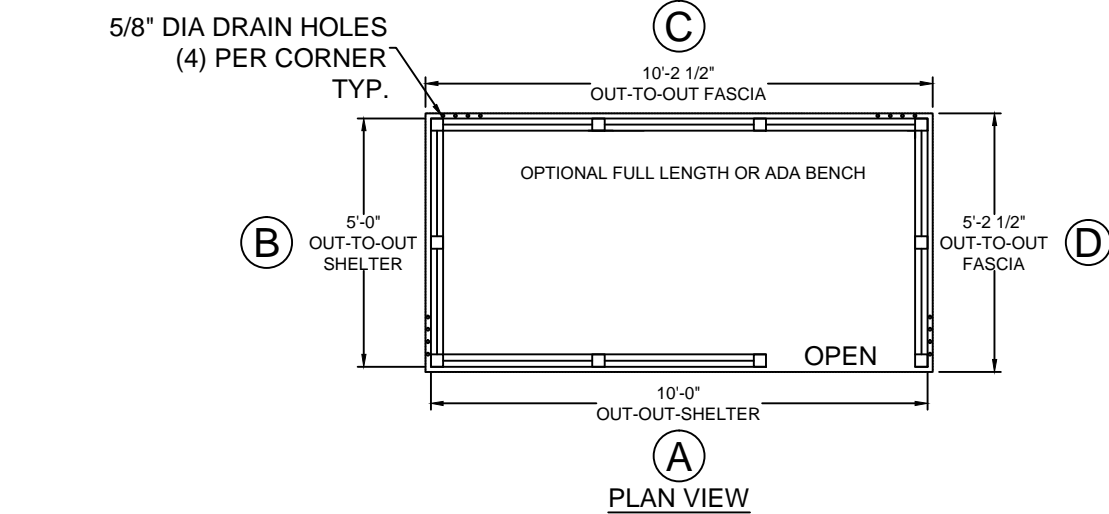


VIEW A-A

VIEW B-B

VIEW C-C

VIEW D-D



CUSTOMER APPROVAL	
THESE DRAWINGS AND SPECIFICATIONS HAVE BEEN PRODUCED IN ACCORDANCE WITH TWIN MODULAR SERVICES INC. PROPOSAL AND THE PROJECT DESIGN. THE PROJECT WILL BE MANUFACTURED IN ACCORDANCE TO THIS INFORMATION AS SUBMITTED. THE SECURING OF BUILDING PERMITS AND COMPLIANCE WITH APPROPRIATE BUILDING CODES IS THE RESPONSIBILITY OF THE PURCHASER OF THE BUILDING AND NOT THE RESPONSIBILITY OF TWIN MODULAR SERVICES INC..	
<input type="checkbox"/> APPROVED AS SUBMITTED	
<input type="checkbox"/> APPROVED AS NOTED	
<input type="checkbox"/> REVISE AND RESUBMIT	
SIGNED: _____	DATE: _____



Twin Modular Services Inc.
1001 Lower Landing Rd. Ste 607
Blackwood, NJ. 08012
Ph: 856-227-0057
e-mail: info@guardboothonline.com
www.guardboothonline.com

Notice - Twin Modular Services Inc. claims proprietary rights in the information disclosed on this drawing. It is issued in confidence for engineering information only and may not be used, in whole or in part, to manufacture anything whether or not shown hereon, reproduced or disclosed to anyone without direct written permission from Twin Modular Services Inc.

TITLE:	5'-0" X 10'-0" ALUMINUM SHELTER
JOB NO:	
QUOTE NO:	
LOCATION:	
MOD NO:	TALS510H1
COLOR:	SEE SPECIFICATIONS
DATE:	01.02.20
DRAWN BY:	TMK
SCALE:	N.T.S.
SHEET:	2 OF 2