

GENERAL SHELTER SPECIFICATIONS:

A. GENERAL: Unassembled modular shelter is fabricated from low maintenance, lightweight corrosive resistant aluminum(factory fabricated). Site assembly required.

- 1 DIMENSIONS: 5'-0" wide x 10'-0" long, 97" nominal exterior height.
- 2 FRAME: Provide structural framing of 6063-T6 aluminum alloy extrusions with a Quaker Bronze finish. Framing assembled using internally located mechanical fasteners. Exposed fasteners on framing system are not acceptable. Standard 7 3/4" ventilation space at bottom of unit. Additional Colors Available.
- 3 ROOF: Constructed using a high impact white acrylic dome. Roof drains into full perimeter gutter system.
- 4 WINDOWS: Fixed windows are single pane 1/4" minimum clear tempered safety glass, glazed within wall system extrusions and not fastened to exterior wall. Glass sealed with concealed gasket system.
- 5 ANCHORING: Shelter installation requires concrete pad to be 12" minimum larger than shelter in both length and width dimensions. Pad must be level within 1/2" over length and width of structure. Shelter to be anchored to pad using height adjustable aluminum shoe and anchored down using 1/4" X 1 7/8" Hilti Kwik Hus-EZ anchors.
- 6 OPTIONAL BENCH: Optional Full Length or ADA Bench Available Upon Request

INSTALLATION: Unit knocked down and crated, off loaded and installed by others.

SHOP USE ONLY



Twin Modular Services Inc.
1001 Lower Landing Rd. Ste 607
Blackwood, NJ. 08012
Ph: 856-227-0057
e-mail: info@guardboothonline.com
www.guardboothonline.com

Notice - Twin Modular Services Inc. claims proprietary rights in the information disclosed on this drawing. It is issued in confidence for engineering information only and may not be used, in whole or in part, to manufacture anything whether or not shown hereon, reproduced or disclosed to anyone without direct written permission from Twin Modular Services Inc.

TITLE: 5'-0" X 10'-0" ALUMINUM
SHELTER DOME ROOF

JOB NO:

QUOTE NO:

LOCATION:

MOD NO: TALS510D1

COLOR: SEE SPECIFICATIONS

DATE:

DRAWN BY: TMK

SCALE: N.T.S.

SHEET: 1 OF 2

CERTIFICATION

CUSTOMER APPROVAL

THESE DRAWINGS AND SPECIFICATIONS HAVE BEEN PRODUCED IN ACCORDANCE WITH TWIN MODULAR SERVICES INC. PROPOSAL AND THE PROJECT DESIGN. THE PROJECT WILL BE MANUFACTURED IN ACCORDANCE TO THIS INFORMATION AS SUBMITTED. THE SECURING OF BUILDING PERMITS AND COMPLIANCE WITH APPROPRIATE BUILDING CODES IS THE RESPONSIBILITY OF THE PURCHASER OF THE BUILDING AND NOT THE RESPONSIBILITY OF TWIN MODULAR SERVICES INC.

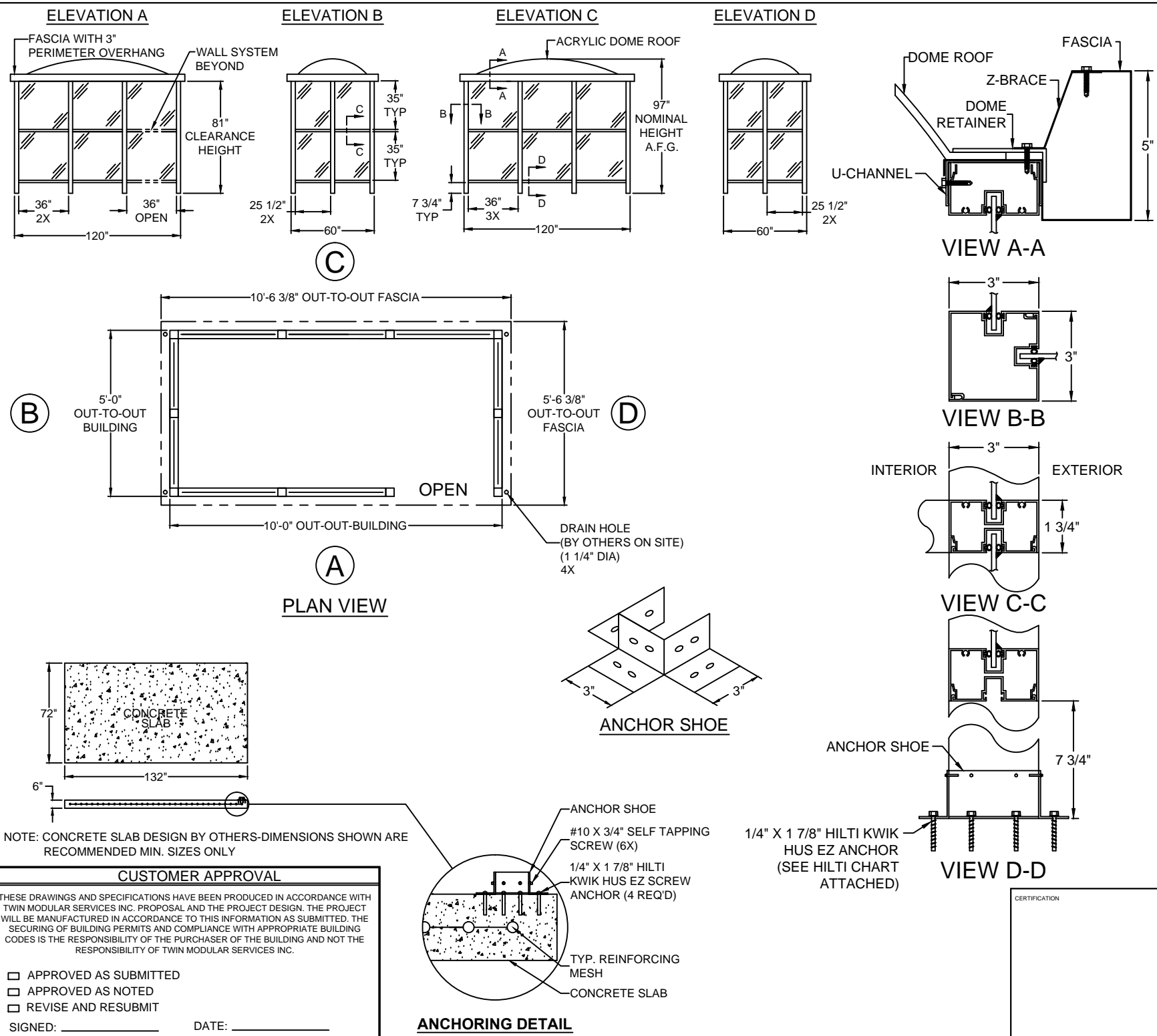
- ☐ APPROVED AS SUBMITTED
☐ APPROVED AS NOTED
☐ REVISE AND RESUBMIT

SIGNED: _____ DATE: _____

DESIGN LOADS

WIND LOAD: 90 mph

SNOW LOAD: 20 psf



SHOP USE ONLY



Twin Modular Services Inc.
1001 Lower Landing Rd. Ste 607
Blackwood, NJ. 08012
Ph: 856-227-0057
e-mail: info@guardboothonline.com
www.guardboothonline.com

Notice - Twin Modular Services Inc. claims proprietary rights in the information disclosed on this drawing. It is issued in confidence for engineering information only and may not be used, in whole or in part, to manufacture anything whether or not shown hereon, reproduced or disclosed to anyone without direct written permission from Twin Modular Services Inc.

TITLE:	5'-0" X 10'-0" ALUMINUM SHELTER DOME ROOF
JOB NO:	
QUOTE NO:	
LOCATION:	
MOD NO:	TALS510D1
COLOR:	SEE SPECIFICATIONS
DATE:	
DRAWN BY:	TMK
SCALE:	N.T.S.
SHEET:	2 OF 2