

# 46 O/A MODULAR GUARD BOOTH

(4' x 6' ACTUAL SIZE)

OHIO DESIGN CODES

2007 OHIO BUILDING CODE  
2007 OHIO MECHANICAL CODE  
2007 OHIO PLUMBING CODE  
2005 NATIONAL ELECTRICAL CODE

DESIGN LIVE LOADS

FLOOR:..... 50 PSF LIVE LOAD  
10 PSF DEAD LOAD

ROOF:..... 40 PSF LIVE LOAD  
10 PSF DEAD LOAD

CONSTRUCTION TYPE:..... 5B  
OCCUPANCY/USE GROUP: B  
BUILDING AREA:..... 24 SQ FT.  
MINIMUM BUILDING  
SET BACK:..... GREATER THAN 10 FEET TO A  
COMMON OR ASSUMED PROPERTY LINE

SEISMIC ZONE:..... GROUP I, CATEGORY C  
MAXIMUM WIND LOAD:..... 90 MPH, EXPOSURE C  
OCCUPANT LOAD:..... 1



DRAWING INDEX

DRAWING NUMBER	DESCRIPTION
#1	SPECIFICATIONS
#2	ELEVATIONS (GUARDHOUSE PLAN "A")(DOOR ON 4' SIDE)
<div>Plan B Not Used</div>	<del>ELEVATIONS (GUARDHOUSE PLAN ""B""(DOOR ON 6' SIDE))</del>
#4	FLOOR / ELECTRICAL PLAN
#5	CROSS SECTION / BLOCKING POINTS PLAN

SPECIAL LIMITATIONS:

ADEQUATE HANDICAPPED RESTROOM FACILITIES TO HANDLE THE ADDITIONAL OCCUPANT LOAD CREATED BY THE ADDITION OF THIS BUILDING TO A SITE SHALL BE PROVIDED IN AN ADJACENT BUILDING ON THE SAME PROPERTY. THE LOCAL OFFICIAL HAVING JURISDICTION SHALL VERIFY THE EXISTING FACILITIES.

**ACCESSIBILITY EXCEPTIONS:**

1103.2.7 Raised areas. Raised areas used primarily for purposes of security, life safety, or fire safety including, but not limited to, observation galleries, prison guard towers, fire towers, or life guard stands are not required to be accessible or to served by an accessible route.

1103.2.10 Single occupant structures. Single occupant structures accessed only by passageways below grade or elevated above grade including, but not limited to, toll booths that are accessed only by underground tunnels, are not required to be accessible

Note: The single occupant guardhouses will be placed on and elevated entrance Island to the park that does not have an accessible route.

TITLE: COVER SHEET	DRAWN BY: R.M.	TWIN MODULAR SERVICES, INC.	DATE: 11/13/07	JOB NO: 2007-371
MODEL: 46 O/A GUARD BOOTH	REV:	1001 LOWER LANDING RD, SUITE 607, BLACKWOOD, NJ 08012	SCALE: NTS	DRAWING NO: CVR

OPTION NOT ACCEPTED

CHASSIS

TYPE: PERIMETER  
MAIN BEAM: 4" STEEL C CHANNEL 5.4 LBS PER FT  
CROSS MEMBERS: 4" STEEL C CHANNEL @ 24" OC  
PAINT: MARINE BASED EPOXY - BLACK

FLOOR

INSULATION: NONE  
DECKING: 3/4" PLYWOOD, 24 O.C. SECURED DIRECTLY TO STEEL FRAME  
OPTIONAL: 1/4" STEEL PLATE FLOOR W/ NON-SKIP EPOXY PAINT  
COVERING: 16 GAUGE ALUMINUM TREAD PLATE FLOOR  
TRIM: 4" VINYL COVE BASE  
MOISTURE BARRIER: TYVEK OR EQUAL  
OPTIONAL: 3/16" ALUMINUM DIAMOND PLATE FLOOR

EXTERIOR WALLS

STUDS: 2"x4" STUD GRADE SPF @ 16" O.C.  
BOTTOM PLATE: SINGLE 2"x4" #3 SPF  
TOP PLATE SINGLE 2"x4" #3 SPF  
WALL HEIGHT: 8'-3"  
FINISHED CEILING HT: 7'-8" A.F.F.  
INSULATION: R-13 FIBERGLASS KRAFT-BACKED BATTS  
INT. WALL COVERING: 1/4" VINYL COVERED PANEL (CLASS III)  
INT. WALL COVERING OPTION: 1/2" VINYL COVERED GYP. (CLASS I)

ROOF

TYPE: RAFTER, 2x4 #2 SPF @ 16" O.C.  
CEILING: 2'x4' T-GRID DROP CEILING @ 7'-9" A.F.F.  
INSULATION: R-13 KRAFT FACED FIBERGLASS BATTS  
STANDARD 6" OVERHANG ALL SIDES  
OPTIONAL: 2"X8" BOW TYPE ROOF WITH R-30 INSULATION  
AND RIGID R-19 FLOOR INSULATION

ELECTRICAL

MAIN DISTRIBUTION PANEL: INTERIOR (WEATHERPROOF) 100 AMP 120/240 VOLT SINGLE PHASE, 3 WIRE, 60 HZ. WITH GROUND  
RACEWAY: MINIMUM #14/2, 90 DEG. C. TYPE MC, COPPER  
INTERIOR LIGHTS: 2'x2' TWO TUBE LAY-IN FLUORESCENT TROFFER PER PRINT  
EXTERIOR LIGHTS: 150 WATT QUARTZ HALOGEN SECURITY LIGHT (WEATHERPROOF)  
SWITCHES: 120 V. 15 AMP SINGLE POLE PER PRINT  
RECEPTACLES: 120 V. 20 AMP QUAD RECEPT  
OPTIONAL: ADDITIONAL 110V DUPLEX RECEPPTS

H.V.A.C.

HEATING: SEE AIR CONDITIONING - OPTIONAL 3000 WATT WALL HEATER  
AIR CONDITIONING: AIR CONDITIONER HEAT COMBO UNIT 8000/4000 BTU 120V DEDICATED CIRCUIT  
OPTION. THERMOSTAT CONTROL OF A/C & B.B. HEATER  
OPTION. 11600 BTU AIR CONDITIONING / HEAT COMBO UNIT, WALL MOUNTED

EXTERIOR WINDOWS & DOORS

DOORS: 36"x80" ALUM. DOOR, ALUM. FRAME, FOAM INSULATED W/ 1 1/2" S.G., LEVER PASSAGE HARDWARE  
STANDARD 36"x80" STEEL DOOR W/ 22"X36" WINDOW (S.G.), CLOSER

WINDOWS: 36"x39" HORIZONTAL SLIDER, ALUM. MILL FRAME, SINGLE GLAZE  
36"x39" CLEAR TEMPERED GLASS HORIZONTAL SLIDER, ALUM. MILL FRAME  
OPTION: 2 36"x39" HORIZONTAL SLIDER, VINYL THERMAL INSULATED WINDOWS  
OPTION. 24"x36" CLEAR TEMPERED GLASS TICKET WINDOW WITH STAINLESS STEEL SHELF, SPEAK-THRU & 1/2 ROUND TICKET SERVICE  
OPTION: 1 36"x39" PICTURE WINDOW - NON OPERABLE, VINYL THERMAL INSULATED OR SINGLE GLAZED MILL FINISH FRAMES

EXTERIOR FINISHES

SIDING: .019 ALUMINUM LIGHT GRAY  
TRIM: .019 ALUMINUM DARK GRAY  
WALL SHEATHING: 7/16" OSB OR CDX PLYWOOD, 16/0 SPAN INDEX RATING  
ROOF SHEATHING: 1/2" CDX PLYWOOD, 16/0 SPAN RATING  
ROOF: .45 EPDM RUBBER ROOFING  
WINDOW AND DOOR TRIM: 3/4" X 1-1/2" ALUMINUM - WHITE  
FURNISHINGS  
COUNTER TOP - WHITE MICA 40" X 18"

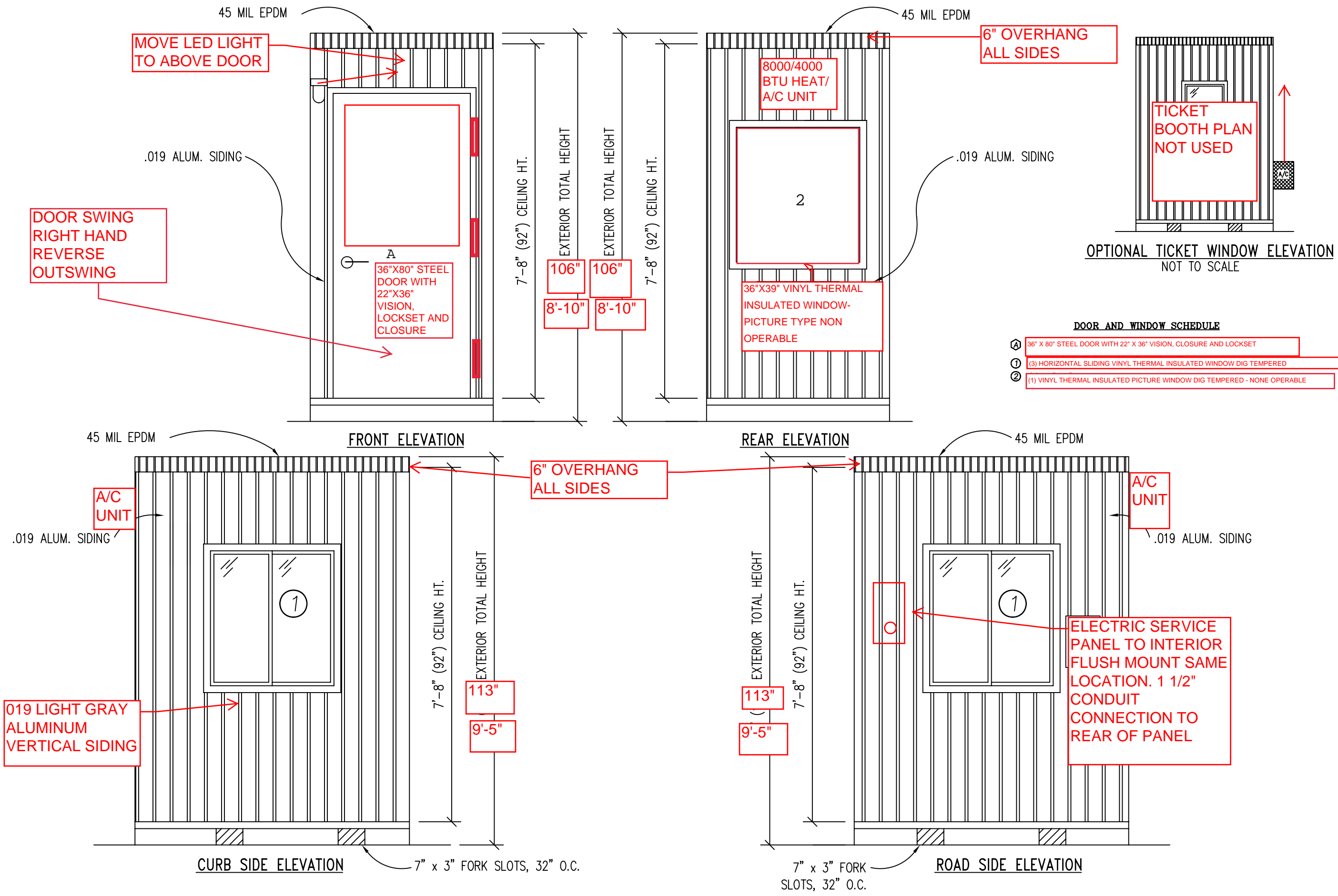
INTERIOR AND EXTERIOR LIGHTING  
TO BE LED

(2)SLIDING WINDOWS - (1) PICTURE WINDOW

TITLE: SPECIFICATIONS	DRAWN BY: R.M.	DATE: 11/14/07	JOB NO: 2007-371
MODEL: 46 O/A GUARD BOOTH	REV:	SCALE: NTS	DRAWING NO: 1

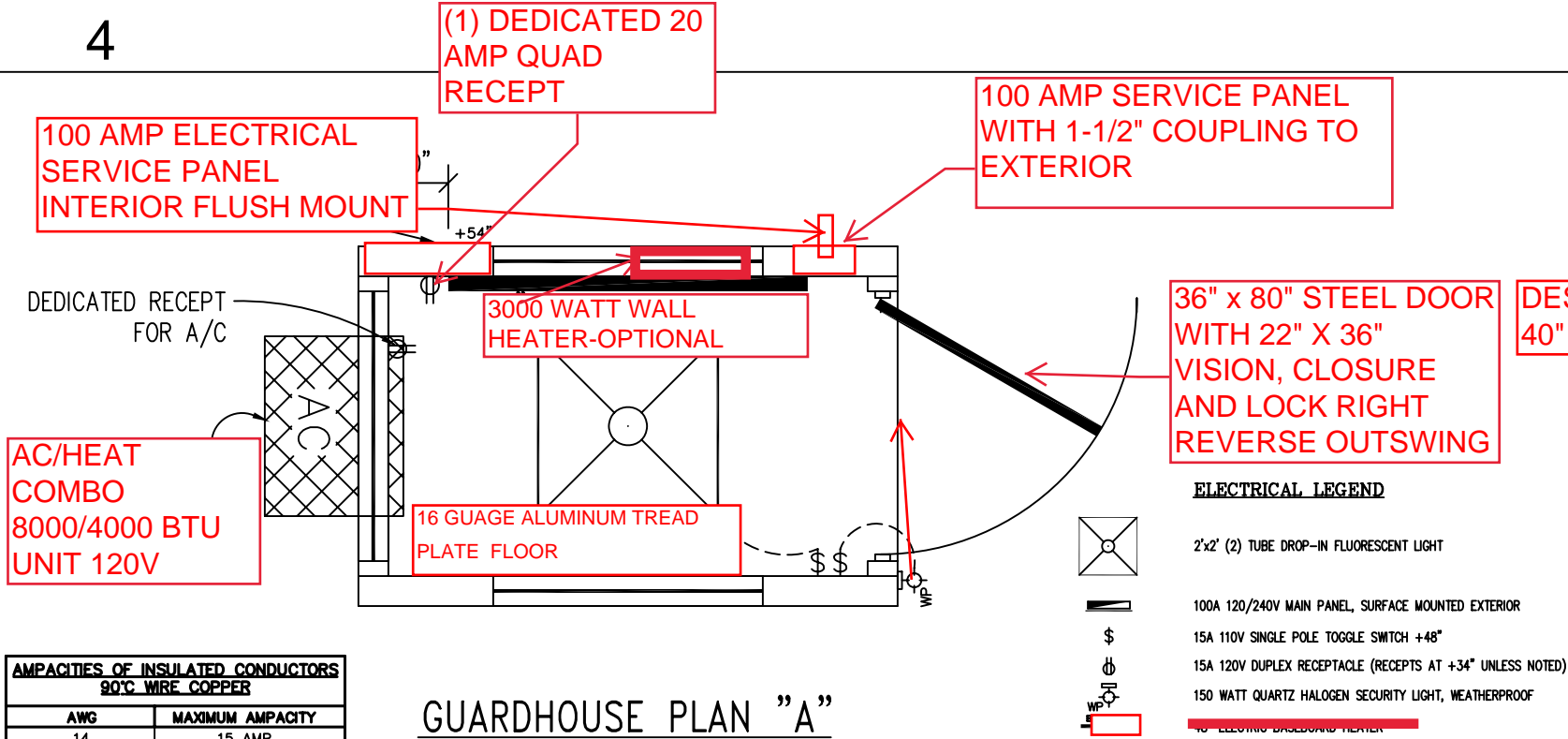
TWIN MODULAR SERVICES, INC.

1001 LOWER LANDING RD, SUITE 607, BLACKWOOD, NJ 08012



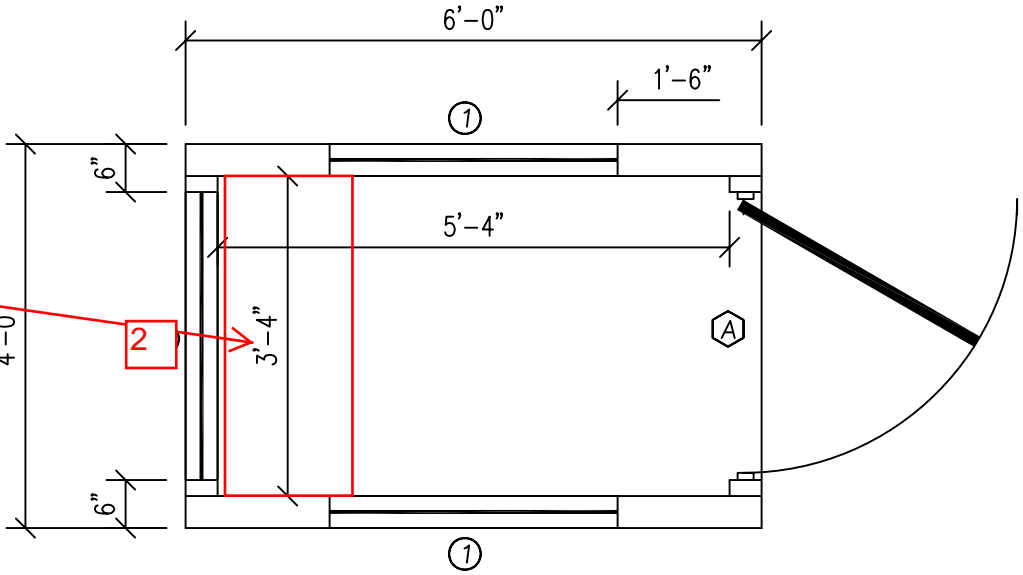
TITLE:	ELEVATIONS (PLAN "A")	DRAWN BY:	R.M.	TWIN MODULAR SERVICES, INC.	DATE:	11/14/07	JOB NO:	2007-371
MODEL:	46 O/A GUARD BOOTH	REV:		1001 LOWER LANDING RD, SUITE 607, BLACKWOOD, NJ 08012	SCALE:	1/4"=1'-0"	DRAWING NO:	2





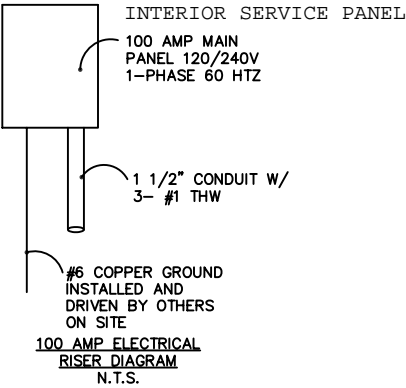
AMPACITIES OF INSULATED CONDUCTORS 90°C WIRE COPPER	
AWG	MAXIMUM AMPACITY
14	15 AMP
12	20 AMP
10	30 AMP
8	50 AMP
6	65 AMP
4	85 AMP
3	100 AMP
2	115 AMP
1	130 AMP

GUARDHOUSE PLAN "A"



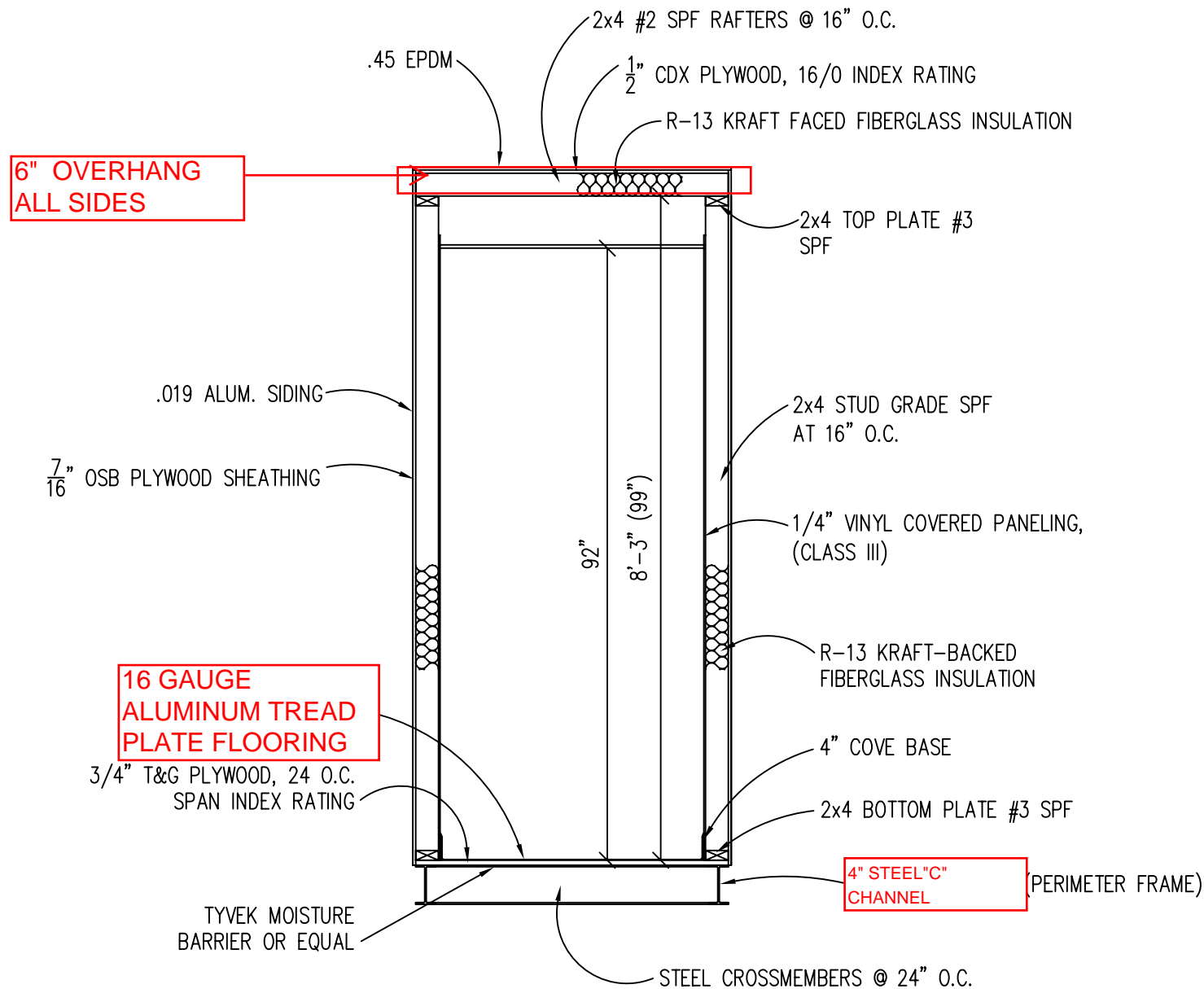
GUARDHOUSE PLAN "A"

DOOR AND WINDOW SCHEDULE	
A	36" X 80" STEEL DOOR WITH 22" X 36" VISION, CLOSURE AND LOCKSET
1	(2) HORIZONTAL SLIDING VINYL THERMAL INSULATED WINDOW DIG TEMPERED
2	(1) VINYL THERMAL INSULATED PICTURE WINDOW DIG TEMPERED - NONE OPERABLE



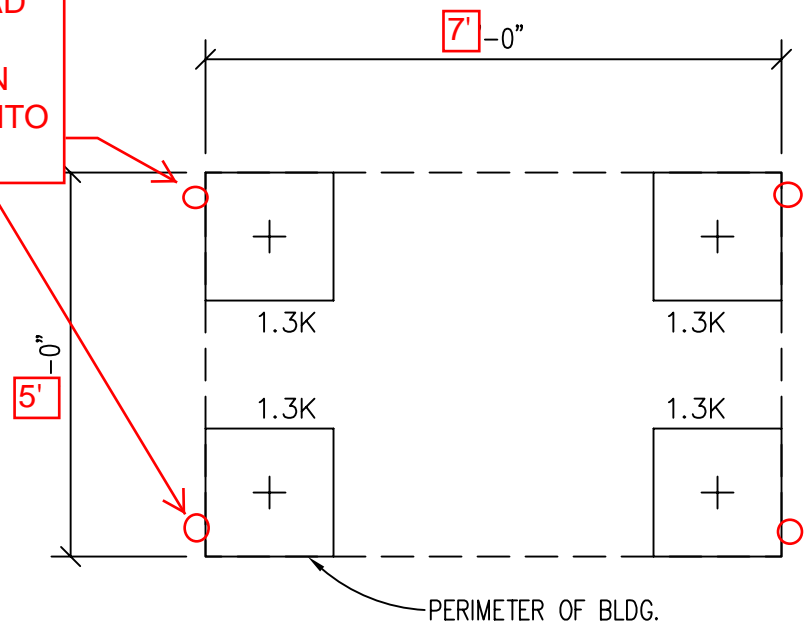
- ELECTRICAL**
1. ALL RECEPTACLES TO BE GROUNDING TYPE.
  2. ALL WIRING TO BE PER THE EDITION OF THE NEC LISTED ON THE COVER PAGE, TYPE NM ROMEX (CU) W/ GROUND.
  3. MAIN PANEL TO BE MARKED "SUITABLE FOR USE AS SERVICE EQUIPMENT", AND BE EQUIPPED W/ BREAKER/FUSE TYPE OVERCURRENT PROTECTION.
  4. PROPER THERMAL OVERLOAD PROTECTION TO BE PROVIDED FOR ALL MOTORS.
  5. DISCONNECTING MEANS WITHIN SIGHT REQUIRED FOR ALL MOTORS.
  6. WEATHERPROOF PROTECTION REQUIRED FOR ALL OUTDOOR LIGHTS, RECEPTACLES AND DISCONNECTS.
  7. PROPER WORKING CLEARANCES TO BE PROVIDED AND MAINTAINED ABOUT ALL ELECTRICAL EQUIPMENT.
  8. ALL FLUORESCENT FIXTURES REQUIRE THERMAL PROTECTION AND PROPER CLEARANCES FROM INSULATION, ALSO APPLICABLE FOR INCANDESCENT FIXTURES.
  9. COMBINATION EXHAUST FAN/LIGHT AND ALL RECESSED INCANDESCENT FIXTURES TO BE WITH THERMAL PROTECTION.
  10. EXIT LIGHTS (IF ELECTRIC) MUST BE FED FROM AN APPROVED EMERGENCY SERVICE CONNECTED AHEAD OF, BUT NOT WITHIN MAIN SERVICE DISCONNECTION MEANS ENCLOSURE, AND INSTALLED AS PER SERVICE REQUIREMENTS, OR BE BATTERY BACKUP TYPE UNITS.
  11. SERVICE CONDUCTORS, LOCATED WITHIN THE PERIMETER OF THE BUILDING, SHALL BE INSTALLED IN ACCORDANCE WITH ARTICLE 230-6, PER THE EDITION OF THE NEC LISTED ON THE COVER PAGE.
  12. MAXIMUM 15 (2) TUBE FLOURESCENT LIGHTS ON 15A CIRCUIT, MAXIMUM 10 RECEPTS ON 15A CIRCUIT, MAXIMUM 7 (4) TUBE FLOURESCENT LIGHTS ON 15A CIRCUIT.
  13. MAXIMUM 20 (2) TUBE FLOURESCENT LIGHTS ON 20A CIRCUIT, MAXIMUM 13 RECEPTS ON 20A CIRCUIT, MAXIMUM 10 (4) TUBE FLOURESCENT LIGHTS ON 20A CIRCUIT.



**BUILDING CODE**

1. ATTIC VENTILATION SHALL NOT BE LESS THAN 1/150th OF THE HORIZONTAL AREA TO BE VENTILATED.
2. THE BUILDING EXTERIOR AND ALL FACILITIES WITHIN THE BUILDING SHALL BE IDENTIFIED WITH THE INTERNATIONAL SYMBOL OF ACCESSIBILITY.
3. OWNER/BUYER SHALL BE RESPONSIBLE FOR ON SITE BARRIER FREE PROVISIONS: STEPS, RAMPS, PARKING SIGNS, ETC. - BUILDING APPROACH (WALK OR RAMP) WITH A MINIMUM WIDTH OF 5' AND A GRADIENT OF NOT MORE THAN 1 FOOT IN 20 FEET.
4. ALL LOCKS TO BE UNLOCKABLE FROM THE INTERIOR WITHOUT THE USE OF A KEY OR SPECIAL KNOWLEDGE.
5. CORROSION RESISTANT FLASHING AT TOP AND SIDES OF DOORS, WINDOWS AND AT ROOF PENETRATIONS.
6. ALL GLAZING WITHIN 24" OF EXTERIOR PASSAGE DOORS AND IN PASSAGE DOORS, OR WITHIN 18" OF FLOOR TO BE "SAFETY GLAZED" AND SO MARKED.

4 CONCRETE RED HEAD TYPE ANCHORS THROUGH 3/4" HOLE IN STEEL "C" CHANNEL INTO CONCRETE SLAB

**FOUNDATION AND TIE-DOWN DESIGN BY OTHERS**

CONCRETE SLAB TYPE FOUNDATION 7'-0" X 5'-0". TIE-DOWN WITH (4) CONCRETE WEDGE ANCHORS THROUGH STEEL "C" CHANNEL INTO CONCRETE. WEDGE ANCHORS ARE RED HEAD TYPE 1/2" X 4" #11285

**DESIGN LOADS**

FLOOR LIVE LOAD	= 50 PSF
FLOOR DEAD LOAD	= 10 PSF
ROOF LIVE LOAD	= 40 PSF
ROOF DEAD LOAD	= 10 PSF
EXTERIOR WALL DEAD LOAD	= 42 PLF

**FOUNDATION LEGEND**

+	INDICATES BLOCKING TO BOTTOM OF MAIN I-BEAM
⊗	INDICATES BLOCKING TO BOTTOM OF COLUMN
⊙	INDICATES MINUTE-MAN OR EQUAL FRAME TIE-DOWN LOCATION AND DIRECTION

**FOUNDATION**

1. THE PIER LOCATIONS SHOWN ON THIS PLAN ARE FOR THE PURPOSE OF IDENTIFYING THE LOCATION OF THE REQUIRED BLOCKING POINTS AND THE LOADS APPLIED AT EACH POINT FOR THIS BUILDING. FOUNDATION REQUIREMENTS ARE NOT KNOWN DUE TO VARYING SOIL CONDITIONS.
2. FOUNDATION DESIGN IS BY OTHERS. FOUNDATION REVIEW AND APPROVAL IS TO BE PERFORMED BY THE LOCAL OFFICIAL HAVING JURISDICTION.
3. CRAWL SPACE TO BE VENTILATED AT 1 SQ. FT. PER EACH 150 SQ. FT. OF CRAWL SPACE AREA TO BE VENTILATED.
4. PROVIDE POSITIVE DRAINAGE UNDER UNIT.
5. PROVIDE MINIMUM CRAWL SPACE ACCESS OF 22" x 24".
6. PIER LOADS ARE SHOWN IN KIPS

TITLE: BLOCKING POINTS PLAN CROSS SECTION	DRAWN BY: R.M.	DATE: 11/14/07	JOB NO: 2007-371
MODEL: 46 O/A GUARD BOOTH	REV:	SCALE: 1/4"=1'-0"	DRAWING NO: 5

TWIN MODULAR SERVICES, INC.

1001 LOWER LANDING RD, SUITE 607, BLACKWOOD, NJ 08012