

68 0/A MODULAR TICKET BOOTH

(6' x 8' ACTUAL SIZE)

NORTH CAROLINA DESIGN CODES

2003 INTERNATIONAL BUILDING CODE W/ N.C. AMENDMENTS
2003 INTERNATIONAL MECHANICAL CODE W/ N.C. AMENDMENTS
2003 INTERNATIONAL PLUMBING CODE W/ N.C. AMENDMENTS
2005 NATIONAL ELECTRICAL CODE W/ N.C. AMENDMENTS

DESIGN LIVE LOADS

FLOOR:..... 50 PSF LIVE LOAD
10 PSF DEAD LOAD

ROOF:..... 30 PSF LIVE LOAD
10 PSF DEAD LOAD

CONSTRUCTION TYPE:..... 5B
OCCUPANCY/USE GROUP: B
BUILDING AREA:..... 48 SQ FT.
MINIMUM BUILDING
SET BACK:..... GREATER THAN 10 FEET TO A
COMMON OR ASSUMED PROPERTY LINE

SEISMIC ZONE:..... GROUP I, CATEGORY C
MAXIMUM WIND LOAD:..... 90 MPH, EXPOSURE C
OCCUPANT LOAD:..... 1

DRAWING INDEX

DRAWING NUMBER	DESCRIPTION
#1	SPECIFICATIONS
#2	ELEVATIONS
#3	FLOOR / ELECTRICAL PLAN
#4	CROSS SECTION / BLOCKING POINTS PLAN

SPECIAL LIMITATIONS:
ADEQUATE HANDICAPPED RESTROOM FACILITIES TO HANDLE THE
ADDITIONAL OCCUPANT LOAD CREATED BY THE ADDITION OF THIS
BUILDING TO A SITE SHALL BE PROVIDED IN AN ADJACENT
BUILDING ON THE SAME PROPERTY. THE LOCAL OFFICIAL HAVING
JURISDICTION SHALL VERIFY THE EXISTING FACILITIES.

BUYERS ACCEPTANCE SIGN AND DATE:

CONTACT INFO:
TWIN MODULAR SERVICES INC.
1001 LOWER LANDING ROAD
SUITE 607
BLACKWOOD, NJ 08012

TITLE:	COVER SHEET	DRAWN BY:	R.M.	TWIN MODULAR SERVICES, INC.	DATE:	1/11/08	JOB NO:	2008-010
MODEL:	68 0/A TICKET BOOTH	REV:		1001 LOWER LANDING RD, SUITE 607, BLACKWOOD, NJ 08012	SCALE:	NTS	DRAWING NO:	CVR

NOT ACCEPTED

CHASSIS

TYPE: PERIMETER
MAIN BEAM: 6" "C" CHANNEL 8.2 LBS PER FT
CROSS MEMBERS: 6" "C" CHANNEL 8.2 LBS PER F
PAINT: ASPHALT BASED

FLOOR

INSULATION: NONE
DECKING: 3/4" PLYWOOD, 24 O.C. SECURED DIRECTLY TO STEEL FRAME
OPTIONAL: 1/4" STEEL PLATE FLOOR W/ NON-SKID EPOXY PAINT
COVERING: 1/4" COMMERCIAL BLACK RUBBER FLOOR
TRIM: 2" COMMERCIAL BLACK RUBBER BASE TRIM
MOISTURE BARRIER: TYVEK OR EQUAL

EXTERIOR WALLS

STUDS: 2"x4" STUD GRADE SPF @ 16" O.C.
BOTTOM PLATE: SINGLE 2"x4" #3 SPF
TOP PLATE SINGLE 2"x4" #3 SPF
WALL HEIGHT: 8'-3"
FINISHED CEILING HT: 7'-8" A.F.F.
INSULATION: R-13 FIBERGLASS KRAFT-BACKED BATTS
INT. WALL COVERING: 1/8" VINYL COVERED PANEL (CLASS III)

ROOF

TYPE: RAFTER, 2x6 #2 SPF @ 16" O.C. W/ 12" OVERHANG
(TICKET WINDOW SIDE ONLY)
CEILING: 2'x4' T-GRID DROP CEILING @ 7'-8" A.F.F.
INSULATION: R-13 KRAFT FACED FIBERGLASS BATTS

ELECTRICAL

MAIN DISTRIBUTION PANEL: EXTERIOR (WEATHERPROOF) 100 AMP 120/240 VOLT SINGLE PHASE, 3 WIRE, 60 HZ. WITH GROUND
RACEWAY: MINIMUM #14/2, 90 DEG. C. TYPE MC, COPPER
INTERIOR LIGHTS: 2'x4' TWO TUBE LAY-IN FLUORESCENT TROFFER PER PRINT
EXTERIOR LIGHTS: 150 WATT QUARTZ HALOGEN SECURITY LIGHT (WEATHERPROOF)
SWITCHES: 120 V. 15 AMP SINGLE POLE PER PRINT
RECEPTACLES: 120 V. 15 AMP DUPLEX RECEPTS PER PRINT

H.V.A.C.

HEATING: 220V, 20 AMP, 6' ELEC. BASEBOARD HEATER, DEDICATED CIRCUIT
AIR CONDITIONING: 110V, 6500 BTU WALL MOUNT, DEDICATED CIRCUIT
OPTION: 11600 BTU AIR CONTIONING / HEAT COMBO UNIT, WALL MOUNTED

EXTERIOR WINDOWS & DOORS

DOORS: 36"x80" ALUM. DOOR, ALUM. FRAME, FOAM INSULATED W/ 14"x14" S.G., LEVER PASSAGE HARDWARE
OPTION: 36"x80" STEEL DOOR W/ 22"x30" WINDOW (S.G.), CLOSER

WINDOWS: 24"x36" CLEAR TEMPERED GLASS TICKET WINDOW WITH STAINLESS STEEL SHELF, SPEAK-THRU & 1/2 ROUND TICKET SERVICE
OPTION: (3) 36"x39" HORIZONTAL SLIDER, VINYL THERMAL INSULATED WINDOWS

EXTERIOR FINISHES

SIDING: .019 ALUMINUM STANDARD COLOR - LITE GRAY
TRIM: .019 ALUMINUM STANDARD COLOR DARK GRAY
WALL SHEATHING: 7/16" OSB OR CDX PLYWOOD, 16/0 SPAN INDEX RATING
ROOF SHEATHING: 1/2" CDX PLYWOOD, 16/0 SPAN RATING
ROOF: .45 EPDM RUBBER ROOFING

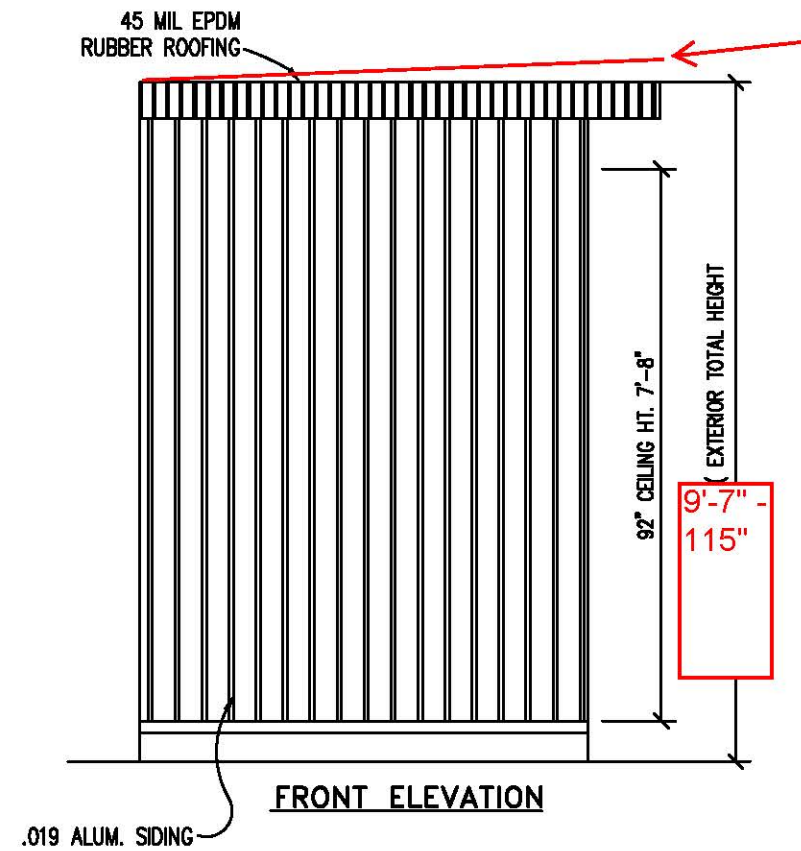
FURNISHINGS

COUNTER TOP - WHITE MICA

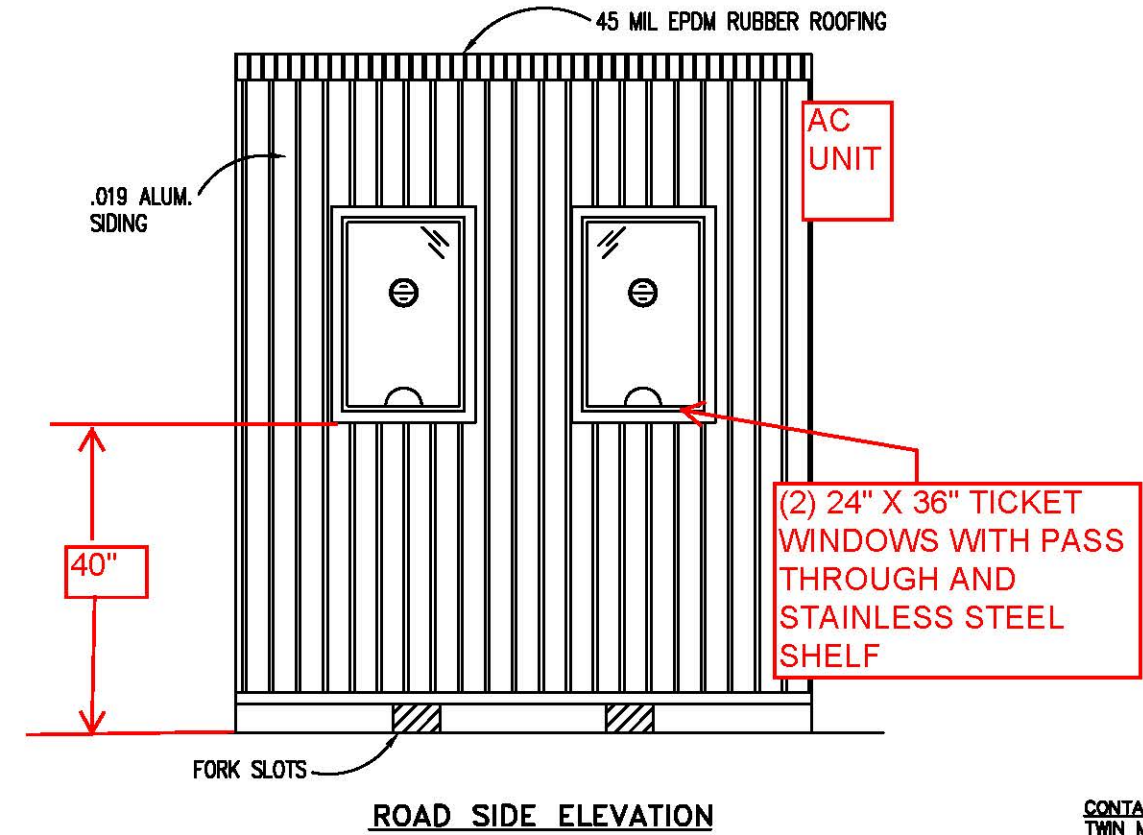
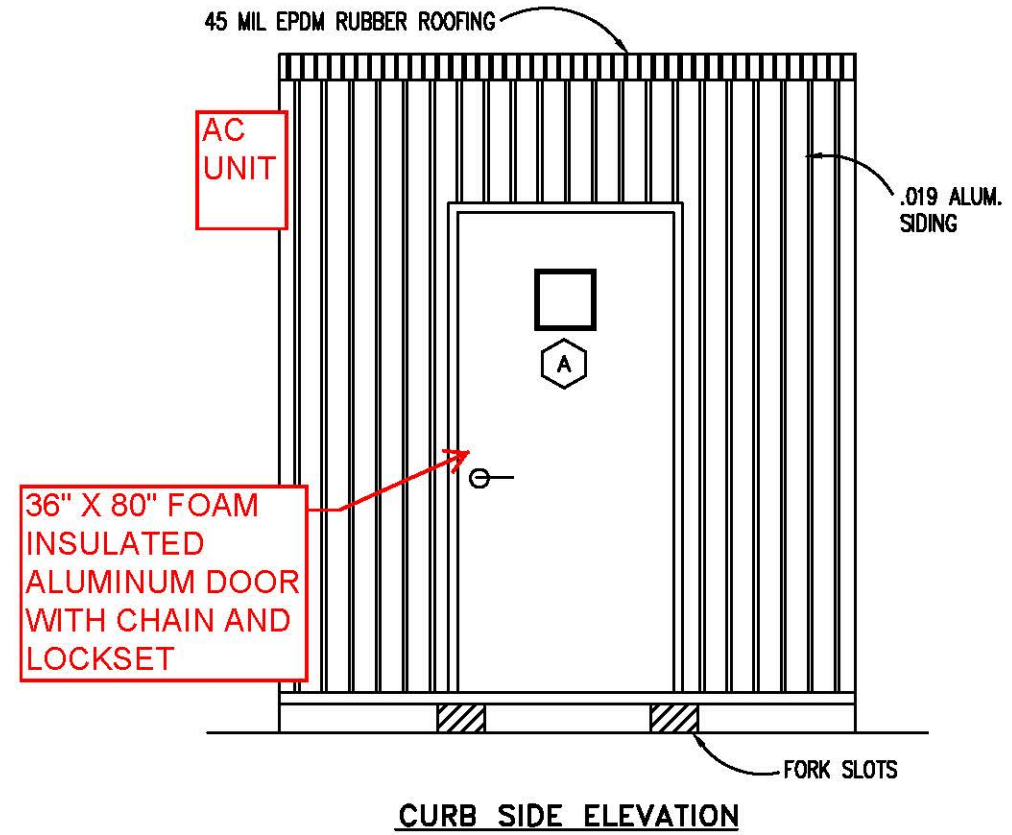
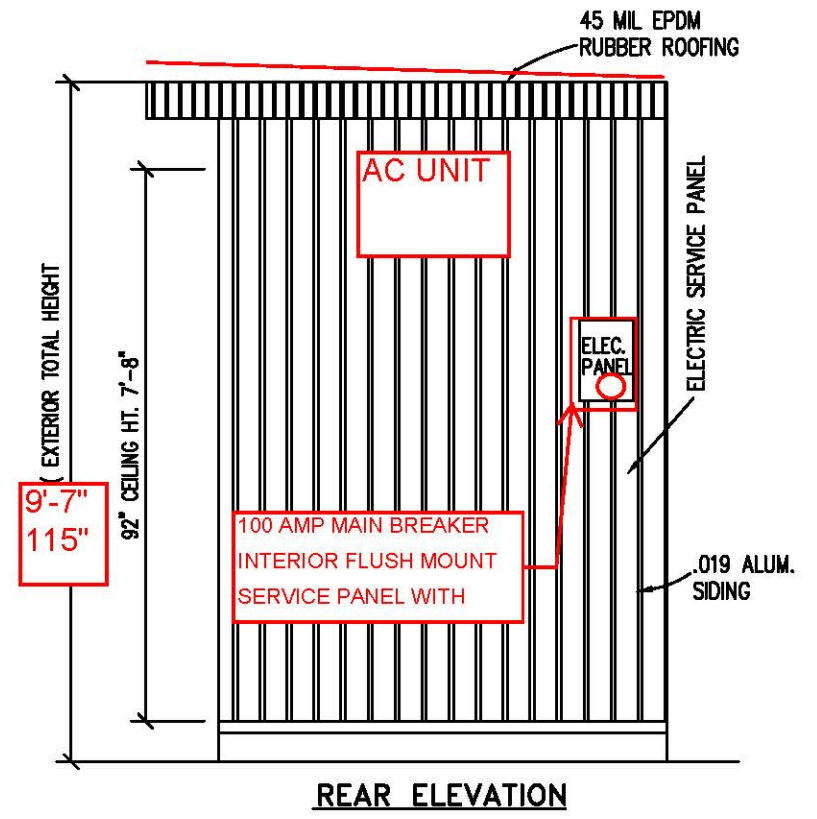
BUYERS ACCEPTANCE SIGN AND DATE:

CONTACT INFO:
TWIN MODULAR SERVICES INC.
1001 LOWER LANDING ROAD
SUITE 607
BLACKWOOD, NJ 08012

TITLE: SPECIFICATIONS	DRAWN BY: R.M.	TWIN MODULAR SERVICES, INC.	DATE: 1/11/08	JOB NO: 2008-010
MODEL: 68 O/A TICKET BOOTH	REV:	1001 LOWER LANDING RD, SUITE 607, BLACKWOOD, NJ 08012	SCALE: NTS	DRAWING NO: 1



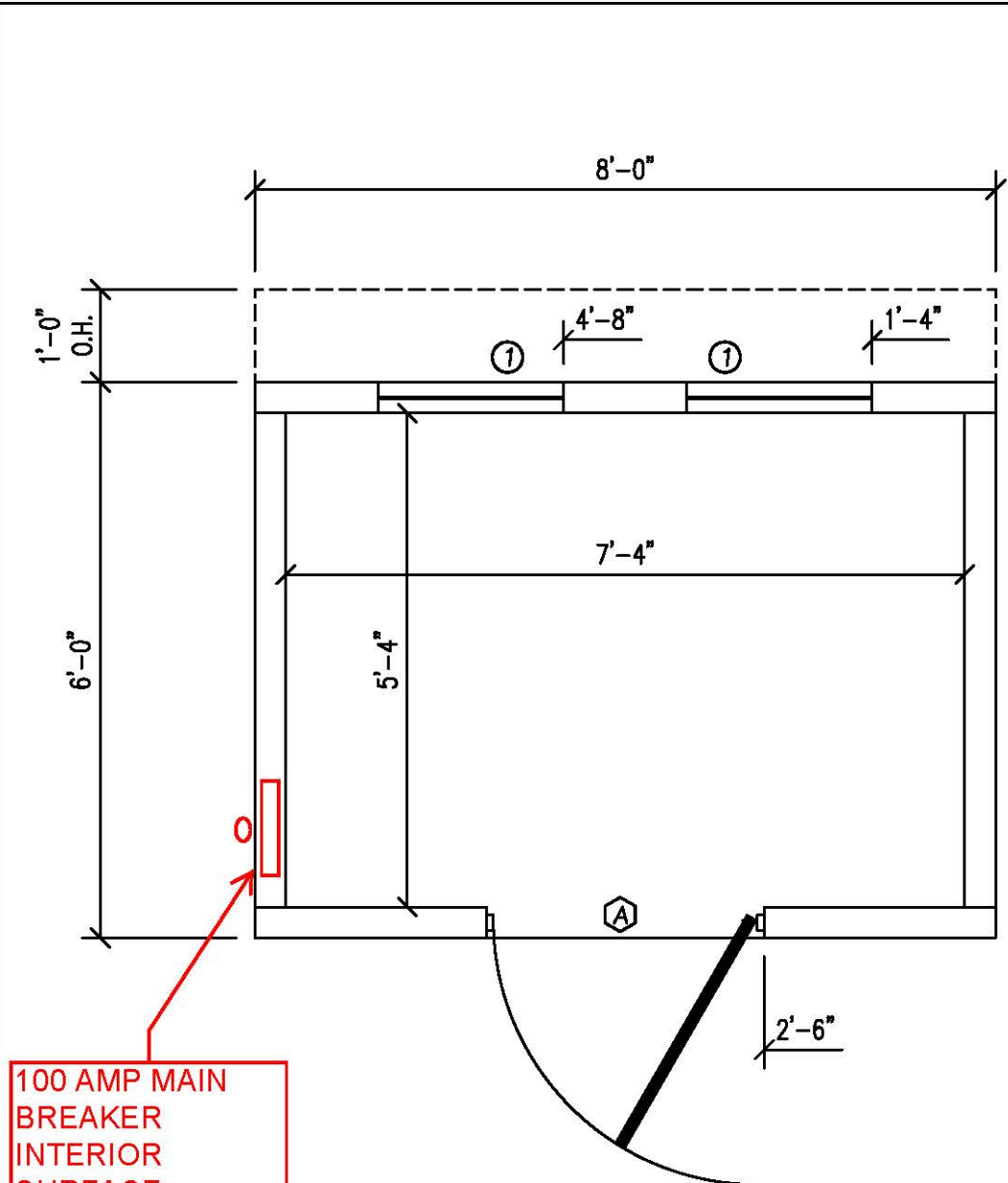
ROOF PITCHED
1/4" TO 1'



BUYERS ACCEPTANCE SIGN AND DATE:

CONTACT INFO:
TWIN MODULAR SERVICES INC.
1001 LOWER LANDING ROAD
SUITE 607
BLACKWOOD, NJ 08012

TITLE: ELEVATIONS	DRAWN BY: R.M.	DATE: 1/11/08	JOB NO: 2008-010
		SCALE: 3/8"=1'-0"	DRAWING NO: 2
MODEL: 68 O/A TICKET BOOTH	TWIN MODULAR SERVICES, INC. 1001 LOWER LANDING RD, SUITE 607, BLACKWOOD, NJ 08012		



FLOOR PLAN

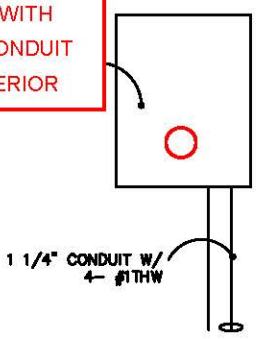
100 AMP MAIN
BREAKER
INTERIOR
SURFACE
MOUNT SERVICE
PANEL WITH
1-1/2" CONDUIT
TO EXTERIOR

DOOR AND WINDOW SCHEDULE

- Ⓐ 36"x80" ALUM. DOOR, ALUM. FRAME, FOAM INSULATED W/ 14"x14" WINDOW (SAFETY GLAZED), LEVER HARDWARE
- ① 24"x36" CLEAR TEMPERED GLASS TICKET WINDOW WITH STAINLESS STEEL SHELF, SPEAK-THRU & 1/2 ROUND TICKET SERVICE

AMPACITIES OF INSULATED CONDUCTORS 90°C WIRE COPPER	
AWG	MAXIMUM AMPACITY
14	15 AMP
12	20 AMP
10	30 AMP
8	50 AMP
6	65 AMP
4	85 AMP
3	100 AMP
2	115 AMP
1	130 AMP

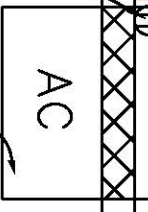
INTERIOR FLUSH
MOUNT WITH
1-1/2" CONDUIT
TO EXTERIOR



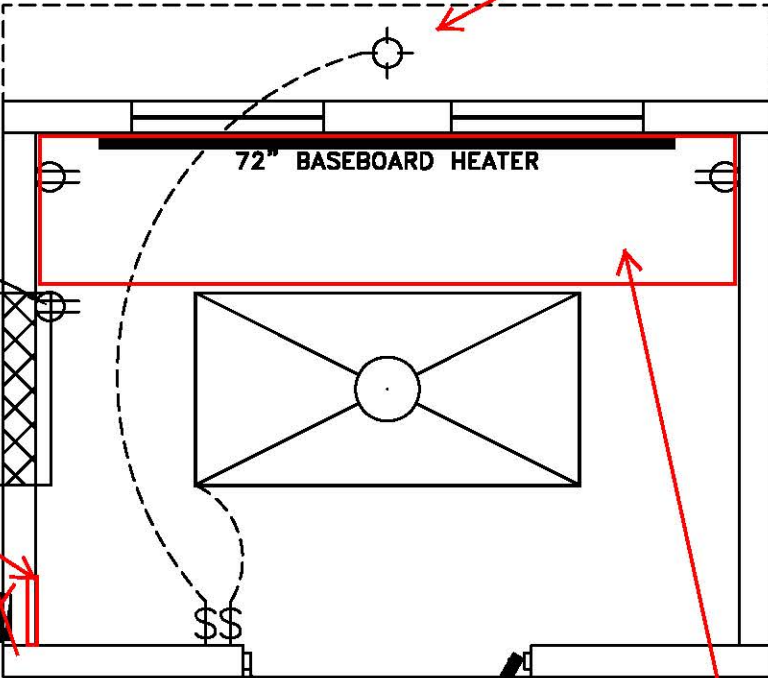
TYP. 100 AMP ELECTRICAL
RISER DIAGRAM
N.T.S.

100 AMP MAIN
BREAKER
INTERIOR FLUSH
MOUNT SERVICE
PANEL WITH
1-1/2" CONDUIT
TO EXTERIOR

DEDICATED RECEPT
FOR A/C



12" OVERHANG
TICKET WINDOW
SIDE ONLY

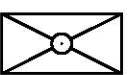


24" WHITE
LAMINATE
COUNTER TOP
30" AFF

ELECTRICAL PLAN

ELECTRICAL

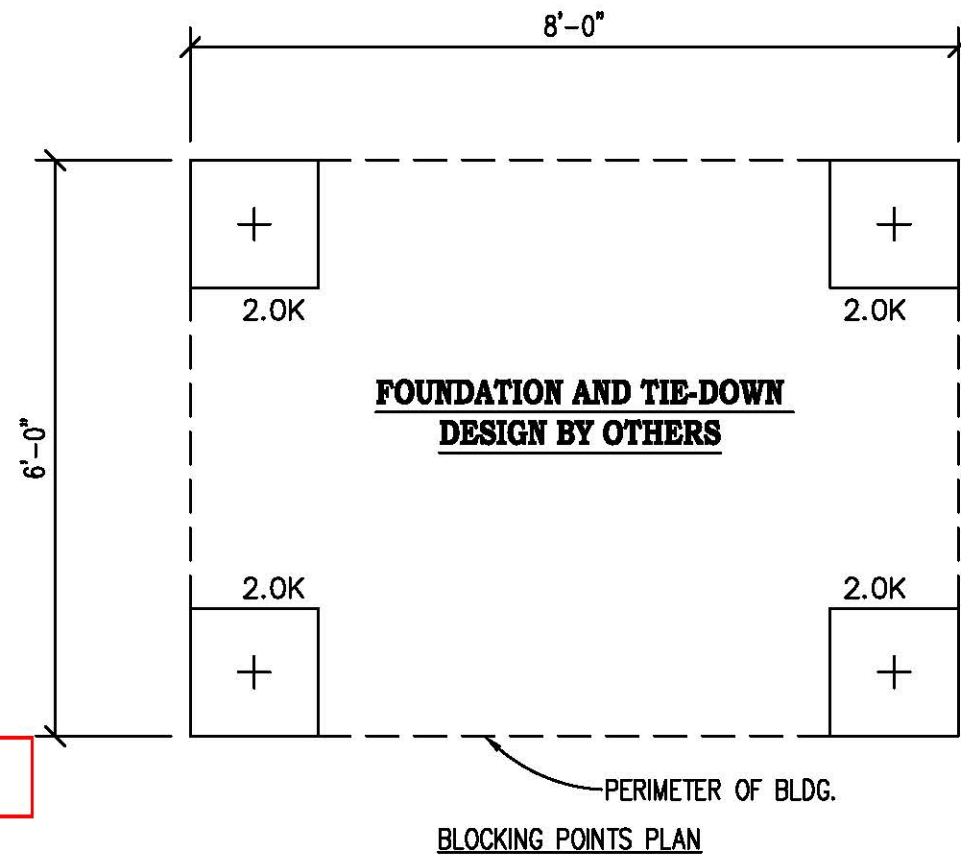
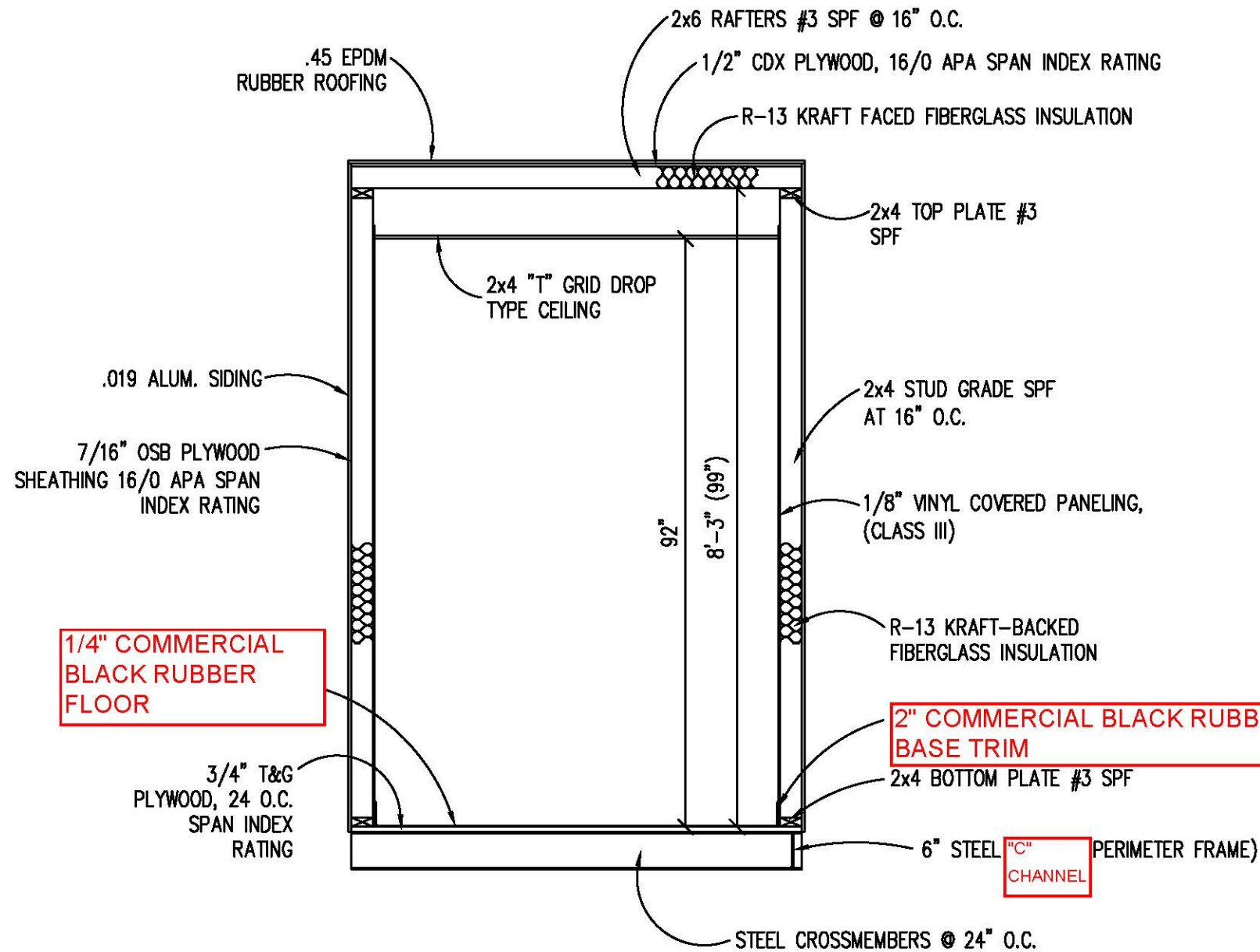
1. ALL RECEPTACLES TO BE GROUNDING TYPE.
2. ALL WIRING TO BE PER THE EDITION OF THE NEC LISTED ON THE COVER PAGE, TYPE MC (CU) W/ GROUND.
3. MAIN PANEL TO BE MARKED "SUITABLE FOR USE AS SERVICE EQUIPMENT", AND BE EQUIPPED W/ BREAKER/FUSE TYPE OVERCURRENT PROTECTION.
4. PROPER THERMAL OVERLOAD PROTECTION TO BE PROVIDED FOR ALL MOTORS.
5. DISCONNECTING MEANS WITHIN SIGHT REQUIRED FOR ALL MOTORS.
6. WEATHERPROOF PROTECTION REQUIRED FOR ALL OUTDOOR LIGHTS, RECEPTACLES AND DISCONNECTS.
7. PROPER WORKING CLEARANCES TO BE PROVIDED AND MAINTAINED ABOUT ALL ELECTRICAL EQUIPMENT.
8. ALL FLUORESCENT FIXTURES REQUIRE THERMAL PROTECTION AND PROPER CLEARANCES FROM INSULATION, ALSO APPLICABLE FOR INCANDESCENT FIXTURES.
9. COMBINATION EXHAUST FAN/LIGHT AND ALL RECESSED INCANDESCENT FIXTURES TO BE WITH THERMAL PROTECTION.
10. EXIT LIGHTS (IF ELECTRIC) MUST BE FED FROM AN APPROVED EMERGENCY SERVICE CONNECTED AHEAD OF, BUT NOT WITHIN MAIN SERVICE DISCONNECTION MEANS ENCLOSURE, AND INSTALLED AS PER SERVICE REQUIREMENTS, OR BE BATTERY BACKUP TYPE UNITS.
11. SERVICE CONDUCTORS, LOCATED WITHIN THE PERIMETER OF THE BUILDING, SHALL BE INSTALLED IN ACCORDANCE WITH ARTICLE 230-6, PER THE EDITION OF THE NEC LISTED ON THE COVER PAGE.
12. MAXIMUM 15 (2) TUBE FLOURESCENT LIGHTS ON 15A CIRCUIT, MAXIMUM 10 RECEPTS ON 15A CIRCUIT, MAXIMUM 7 (4) TUBE FLOURESCENT LIGHTS ON 15A CIRCUIT.
13. MAXIMUM 20 (2) TUBE FLOURESCENT LIGHTS ON 20A CIRCUIT, MAXIMUM 13 RECEPTS ON 20A CIRCUIT, MAXIMUM 10 (4) TUBE FLOURESCENT LIGHTS ON 20A CIRCUIT.



ELECTRICAL LEGEND

- 2'x4' DROP-IN FLUORESCENT LIGHT
- 100AMP, EXTERIOR, 120/240V MAIN PANEL, WEATHERPROOF
- 15A 110V SINGLE POLE TOGGLE SWITCH +48"
- 15A 120V DUPLEX RECEPTACLE (RECEPTS AT +18" UNLESS NOTED)
- 150 WATT HALOGEN SECURITY LIGHT IN OVER HANG
- 72" BASEBOARD HEATER

BUYERS ACCEPTANCE SIGN AND DATE:



DESIGN LOADS

FLOOR LIVE LOAD	= 50 PSF
FLOOR DEAD LOAD	= 10 PSF
ROOF LIVE LOAD	= 30 PSF
ROOF DEAD LOAD	= 10 PSF
EXTERIOR WALL DEAD LOAD	= 42 PLF

FOUNDATION LEGEND

+	INDICATES BLOCKING TO BOTTOM OF MAIN I-BEAM
⊗	INDICATES MINUTE-MAN OR EQUAL FRAME TIE-DOWN LOCATION AND DIRECTION

FOUNDATION

1. THE PIER LOCATIONS SHOWN ON THIS PLAN ARE FOR THE PURPOSE OF IDENTIFYING THE LOCATION OF THE REQUIRED BLOCKING POINTS AND THE LOADS APPLIED AT EACH POINT FOR THIS BUILDING. FOUNDATION REQUIREMENTS ARE NOT KNOWN DUE TO VARYING SOIL CONDITIONS.
2. FOUNDATION DESIGN IS BY OTHERS. FOUNDATION REVIEW AND APPROVAL IS TO BE PERFORMED BY THE LOCAL OFFICIAL HAVING JURISDICTION.
3. CRAWL SPACE TO BE VENTILATED AT 1 SQ. FT. PER EACH 150 SQ. FT. OF CRAWL SPACE AREA TO BE VENTILATED.
4. PROVIDE POSITIVE DRAINAGE UNDER UNIT.
5. PROVIDE MINIMUM CRAWL SPACE ACCESS OF 22" x 24".

CONTACT INFO:
TWIN MODULAR SERVICES INC.
1001 LOWER LANDING ROAD
SUITE 607
BLACKWOOD, NJ 08012

BUILDING CODE

1. ATTIC VENTILATION SHALL NOT BE LESS THAN 1/150th OF THE HORIZONTAL AREA TO BE VENTILATED.
2. THE BUILDING EXTERIOR AND ALL FACILITIES WITHIN THE BUILDING SHALL BE IDENTIFIED WITH THE INTERNATIONAL SYMBOL OF ACCESSIBILITY.
3. CUSTOMER/BUYER SHALL BE RESPONSIBLE FOR ON SITE BARRIER FREE PROVISIONS: STEPS, RAMPS, PARKING SIGNS, ETC. - BUILDING APPROACH (WALK OR RAMP) WITH A MINIMUM WIDTH OF 5' AND A GRADIENT OF NOT MORE THAN 1 FOOT IN 20 FEET.
4. ALL LOCKS TO BE UNLOCKABLE FROM THE INTERIOR WITHOUT THE USE OF A KEY OR SPECIAL KNOWLEDGE.
5. CORROSION RESISTANT FLASHING AT TOP AND SIDES OF DOORS, WINDOWS AND AT ROOF PENETRATIONS.
6. ALL GLAZING WITHIN 24" OF EXTERIOR PASSAGE DOORS AND IN PASSAGE DOORS, OR WITHIN 18" OF FLOOR TO BE "SAFETY GLAZED" AND SO MARKED.

TITLE: BLOCKING POINTS PLAN CROSS SECTION	DRAWN BY: R.M.	DATE: 1/11/08	JOB NO: 2008-010
		SCALE: 1/4" = 1'-0"	DRAWING NO: 4
MODEL: 68 O/A TICKET BOOTH	TWIN MODULAR SERVICES, INC. 1001 LOWER LANDING RD, SUITE 607, BLACKWOOD, NJ 08012		